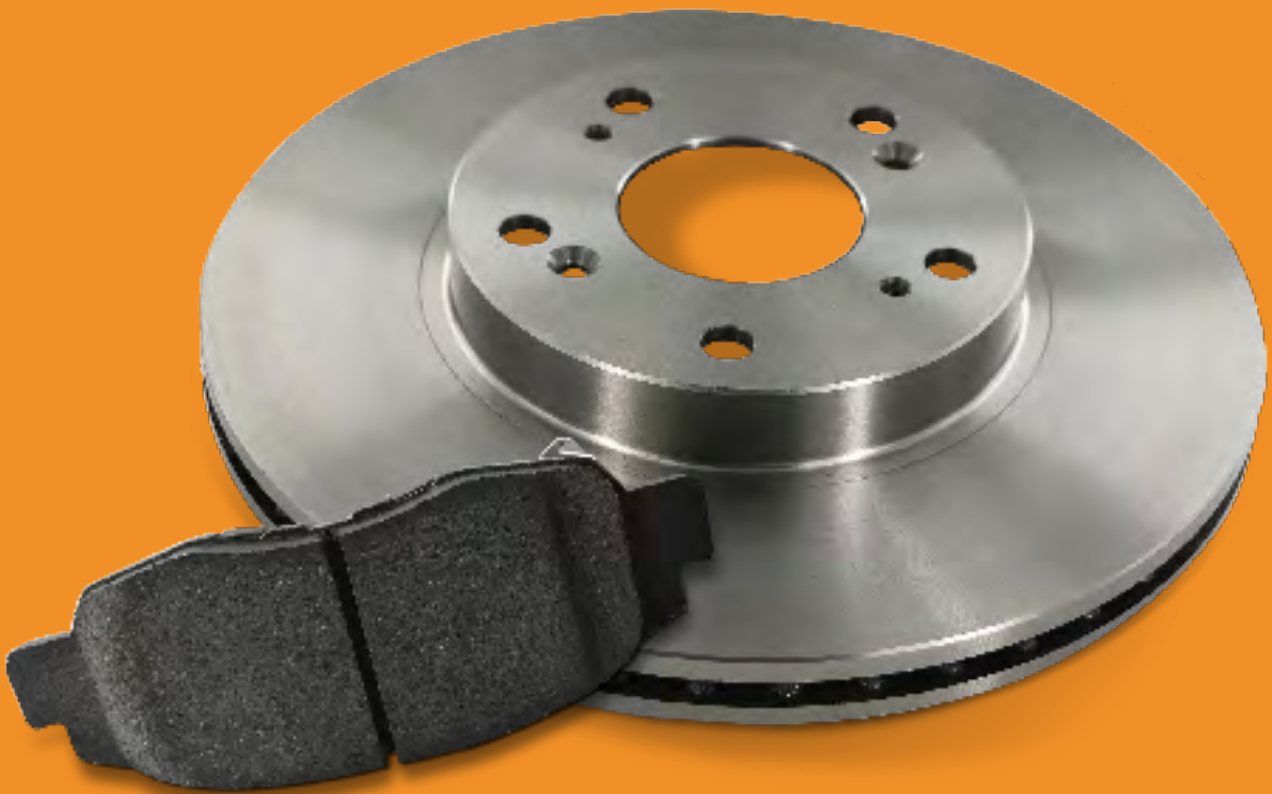


Brake Family Product Catalogue



Omnicraft™

BRAKE PADS AND ROTORS

Omnicraft is the newest brand in the Ford parts lineup, offering affordable, reliable parts designed for non-Ford repairs and backed by Ford Motor Company. Omnicraft offers maintenance & light repair parts including filters and brake parts. Additional product lines are under development to meet the needs of different applications.

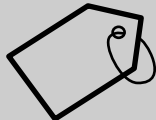
Your benefits at a glance

Omnicraft is your new opportunity to get into the parts game for non-Ford vehicles in your area. With Omnicraft, your customers aren't only getting the quality parts they need, you're also giving them:



Confidence

Omnicraft is the newest member of Ford family of parts and provides a high-quality solution for non-Ford vehicles. Backed by Ford Motor Company and with over a century of parts heritage to build upon, Omnicraft is sure to give your customers confidence and peace of mind in their choices.



Competitive pricing

The competitively-priced Omnicraft range makes no compromises on quality, fit and performance.



Quality

As part of the Ford family of parts, Omnicraft comes fortified with the reliable Ford brand heritage and quality guarantee.

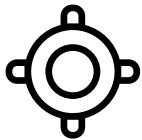


Convenience

Find the parts you need for Ford and non-Ford in one place, helping you get jobs done faster and keep your customers satisfied.

Omnecraft brake pads features

Non asbestos organic compound



Well controlled vibration and harshness to reduce noise and dust



Durability with low wear

Semi-metallic



High heat absorption that pulls heat out of the braking system



Consistent braking performance

Omnecraft brake rotors features



Engineered for reliable quality and stable performance



Reliable vehicle braking power



Manufactured with multiple alloys for optimum heat dissipation



Mill-balanced for proper rotor function



Precise machining tolerances minimize brake shudder

BRAKE PADS BRAKE ROTORS



Omnicraft™

Application Data For Domestic And Import Passenger Cars And Light/Medium Trucks

Make	Model	Stroke capacity (ltr)	Fuel Type	Drive (instigation) / Axle position	Body Sytle	Year (from)	Year (till)	Omnicraft Part Number Front Brake Pads	Omnicraft Part Number Rear Brake Pads	Omnicraft Part Number Front Brake Rotors	Omnicraft Part Number Rear Brake Rotors
AUDI	A1	1.2	Petrol	Front wheel drive (4x2)	Hatchback	2010-05	2015-04	-	-	QBRR679	-
	A1 Sportback	1.0	Petrol	Front wheel drive (4x2)	Hatchback	2015-03	S	QBR109	-	-	-
		1.4	Petrol	Front wheel drive (4x2)	Hatchback	2011-11	2015-04	QBR109	-	-	-
		1.8	Petrol	Front wheel drive (4x2)	Hatchback	2015-02	S	QBR109	-	-	-
	A3	1.6	Petrol	Front wheel drive (4x2)	Hatchback	2003-06	2012-08	QBR109	QBR187	-	-
		1.8	Petrol	Front wheel drive (4x2)	Hatchback	2007-01	2012-08	QBR109	-	-	-
		2.0	Diesel	Front wheel drive (4x2)	Hatchback	2003-06	2008-06	QBR109	-	-	-
	A3 Cabrio	2.0	Petrol	Front wheel drive (4x2)	Hatchback	2004-09	2008-06	QBR109	-	-	-
		1.6	Petrol	Front wheel drive (4x2)	Cabriolet	2008-09	2010-05	QBR109	QBR187	-	-
		1.8	Petrol	Front wheel drive (4x2)	Cabriolet	2008-04	2013-05	QBR109	-	-	-
	A3 Quattro	2.0	Petrol	Front wheel drive (4x2)	Cabriolet	2008-04	2013-05	QBR109	-	-	-
		2.0	Petrol	4 Wheel drive (4x4)	Hatchback	2004-09	2009-05	QBR109	QBR187	-	-
		3.2	Petrol	4 Wheel drive (4x4)	Hatchback	2003-07	2009-05	-	QBR187	-	-
	A3 Sportback	1.4	Petrol	Front wheel drive (4x2)	Hatchback	2007-09	2013-03	QBR109	-	-	-
		1.6	Petrol	Front wheel drive (4x2)	Hatchback	2004-09	2013-03	QBR109	QBR187	-	-
		1.8	Petrol	Front wheel drive (4x2)	Hatchback	2007-01	2013-03	QBR109	-	-	-
		1.9	Diesel	Front wheel drive (4x2)	Hatchback	2006-06	2010-05	QBR109	-	-	-
		2.0	Diesel	Front wheel drive (4x2)	Hatchback	2004-09	2013-03	QBR109	-	-	-
	A3 Sportback Quattro	2.0	Petrol	Front wheel drive (4x2)	Hatchback	2004-09	2013-03	QBR109	-	-	-
		2.0	Petrol	4 Wheel drive (4x4)	Hatchback	2005-11	2013-03	QBR109	QBR187	-	-
	A4	3.2	Petrol	4 Wheel drive (4x4)	Hatchback	2003-07	2009-05	-	QBR187	-	-
		2.0	Petrol	Front wheel drive (4x2)	Saloon	2004-11	2007-10	-	QBR187	-	-
	A4 Cabrio	3.2	Petrol	Front wheel drive (4x2)	Saloon	2004-11	2007-10	-	QBR187	-	-
		2.0	Petrol	Front wheel drive (4x2)	Cabriolet	2006-01	2009-03	-	QBR187	-	-
	A4 Cabrio Quattro	3.2	Petrol	Front wheel drive (4x2)	Cabriolet	2006-01	2009-03	-	QBR187	-	-
		3.0	Diesel	4 Wheel drive (4x4)	Estate	2006-01	2009-03	-	QBR187	-	-
	A4 Quattro	3.0	Diesel	4 Wheel drive (4x4)	Saloon	2006-01	2009-03	-	QBR187	-	-
		2.0	Petrol	4 Wheel drive (4x4)	Estate	2004-11	2008-06	-	QBR187	-	-
		2.0	Petrol	4 Wheel drive (4x4)	Saloon	2004-11	2007-10	-	QBR187	-	-
		3.0	Diesel	4 Wheel drive (4x4)	Cabriolet	2004-11	2007-10	-	QBR187	-	-
		3.0	Diesel	4 Wheel drive (4x4)	Estate	2004-11	2008-03	-	QBR187	-	-
	A6	3.0	Diesel	4 Wheel drive (4x4)	Saloon	2005-11	2008-03	-	QBR187	-	-
		2.4	Petrol	Front wheel drive (4x2)	Estate	1998-02	2001-05	-	QBR187	-	-
		2.4	Petrol	Front wheel drive (4x2)	Estate	2005-03	2008-10	-	QBR187	-	-
		2.4	Petrol	Front wheel drive (4x2)	Saloon	1997-04	2008-10	-	QBR187	-	-
	A6 Quattro	2.8	Petrol	Front wheel drive (4x2)	Saloon	2006-11	2008-10	-	QBR187	-	-
		2.4	Petrol	4 Wheel drive (4x4)	Estate	1998-02	2001-05	-	QBR187	-	-
		2.4	Petrol	4 Wheel drive (4x4)	Saloon	1999-01	2001-05	-	QBR187	-	-
		2.7	Petrol	4 Wheel drive (4x4)	Saloon	2001-06	2005-01	-	QBR187	-	-
		3.0	Petrol	4 Wheel drive (4x4)	Estate	2005-03	2006-05	-	QBR187	-	-
		3.0	Petrol	4 Wheel drive (4x4)	Saloon	2001-06	2011-03	-	QBR187	-	-
		3.2	Petrol	4 Wheel drive (4x4)	Estate	2005-03	2008-10	-	QBR187	-	-
Q3	3.2	Petrol	4 Wheel drive (4x4)	Saloon	2004-04	2008-10	-	QBR187	-	-	
	1.4	Petrol	Front wheel drive (4x2)	Sport Utility Vehicle	2013-10	S	-	-	QBRR700	QBRR786	
	2.0	Petrol	4 Wheel drive (4x4)	Sport Utility Vehicle	2011-06	2015-04	-	-	QBRR700	-	
TT	1.8	Petrol	Front wheel drive (4x2)	Coupe	2008-06	2014-06	-	QBR187	-	-	
	2.0	Petrol	Front wheel drive (4x2)	Cabriolet	2007-03	2014-06	QBR109	QBR187	-	-	
TT Quattro	2.0	Petrol	Front wheel drive (4x2)	Coupe	2006-08	2014-06	QBR109	QBR187	-	-	
	2.0	Diesel	4 Wheel drive (4x4)	Cabriolet	2010-05	2014-06	QBR109	QBR187	-	-	
	2.0	Diesel	4 Wheel drive (4x4)	Coupe	2008-06	2014-06	QBR109	QBR187	-	-	
		3.2	Petrol	4 Wheel drive (4x4)	Cabriolet	2007-03	2010-06	QBR109	QBR187	-	-

BRAKE PADS BRAKE ROTORS



Omnicraft™

Application Data For Domestic And Import Passenger Cars And Light/Medium Trucks

Make	Model	Stroke capacity (ltr)	Fuel Type	Drive (instigation) / Axle position	Body Sytle	Year (from)	Year (till)	Omnicraft Part Number Front Brake Pads	Omnicraft Part Number Rear Brake Pads	Omnicraft Part Number Front Brake Rotors	Omnicraft Part Number Rear Brake Rotors
AUDI	TT Quattro	3.2	Petrol	4 Wheel drive (4x4)	Coupe	2006-08	2010-06	QBR109	QBR187	-	-
	TTS Quattro	2.0	Petrol	4 Wheel drive (4x4)	Cabriolet	2008-05	2014-06	QBR109	QBR187	-	-
		2.0	Petrol	4 Wheel drive (4x4)	Coupe	2008-05	2014-06	QBR109	QBR187	-	-
BMW	316i	1.9	Petrol	Rear wheel drive (4x2)	Coupe	1998-09	2005-02	QBR70	QBR160	-	-
	318i	1.9	Petrol	Rear wheel drive (4x2)	Saloon	1998-02	2001-06	QBR70	QBR160	-	-
		2.0	Petrol	Rear wheel drive (4x2)	Saloon	2001-07	2005-02	QBR70	QBR160	-	-
	318i Com- pact	1.9	Petrol	Rear wheel drive (4x2)	Coupe	1995-07	2000-08	QBR70	QBR160	-	-
		2.0	Petrol	Rear wheel drive (4x2)	Hatchback	2001-09	2005-02	QBR70	QBR160	-	QBRR781
	318i Coupe	1.9	Petrol	Rear wheel drive (4x2)	Hatchback	1995-04	1999-12	QBR70	QBR160	-	-
		1.9	Petrol	Rear wheel drive (4x2)	Saloon	1999-10	2001-08	QBR70	QBR160	-	-
	320i	2.0	Petrol	Rear wheel drive (4x2)	Coupe	2001-09	2003-07	-	QBR160	-	-
		2.0	Petrol	Rear wheel drive (4x2)	Saloon	1998-02	2000-07	QBR70	QBR160	-	-
	320i Coupe	2.2	Petrol	Rear wheel drive (4x2)	Saloon	2000-08	2005-12	QBR70	QBR160	-	-
		2.2	Petrol	Rear wheel drive (4x2)	Coupe	2000-08	2006-07	QBR70	QBR160	-	-
	320i Touring	2.0	Petrol	Rear wheel drive (4x2)	Estate	2007-06	2012-10	-	-	QBRR707	QBRR755
		2.2	Petrol	Rear wheel drive (4x2)	Estate	2000-08	2005-02	QBR70	QBR160	-	-
	325i	2.5	Petrol	Rear wheel drive (4x2)	Saloon	2000-09	2005-05	QBR70	QBR160	-	-
	325i Cabrio	2.5	Petrol	Rear wheel drive (4x2)	Hatchback	2000-08	2007-02	QBR70	QBR160	-	-
	325i Com- pact	2.5	Petrol	Rear wheel drive (4x2)	Cabriolet	2001-06	2005-02	QBR70	QBR160	-	-
	325i Coupe	2.5	Petrol	Rear wheel drive (4x2)	Cabriolet	2000-08	2006-07	QBR70	QBR160	-	-
	328i	2.8	Petrol	Rear wheel drive (4x2)	Saloon	1998-02	2000-07	QBR70	QBR160	-	-
	328i Coupe	2.8	Petrol	Rear wheel drive (4x2)	Coupe	1995-01	1999-02	QBR70	QBR160	-	-
	335i Coupe	3.0	Petrol	Rear wheel drive (4x2)	Coupe	2006-08	S	-	QBR187	-	-
M6 Cabrio	5.0	Petrol	Rear wheel drive (4x2)	Coupe	2006-06	2011-12	-	QBR186	-	-	
	5.0	Petrol	Rear wheel drive (4x2)	Cabriolet	2005-04	2011-12	-	QBR186	-	-	
Z4 Cabrio	2.5	Petrol	Rear wheel drive (4x2)	Cabriolet	2005-09	2009-02	QBR70	QBR160	-	-	
	2.5	Petrol	Rear wheel drive (4x2)	Coupe	2003-01	2005-12	QBR70	QBR160	-	-	
	3.0	Petrol	Rear wheel drive (4x2)	Cabriolet	2003-02	2008-12	QBR70	QBR160	-	-	
CHERY	J11	2.0	Petrol	Front wheel drive (4x2)	Sport Utility Vehicle	2011-01	S	-	-	-	QBRR805
CHRYSLER (USA)	Crossfire	3.2	Petrol	Rear wheel drive (4x2)	Cabriolet	2004-05	2008-01	-	QBR162	-	-
		3.2	Petrol	Rear wheel drive (4x2)	Coupe	2004-05	2008-01	-	QBR162	-	-
	Sebring	2.0	Diesel	Front wheel drive (4x2)	Saloon	2007-07	2010-09	QBR76	QBR174	-	-
		2.4	Petrol	Front wheel drive (4x2)	Saloon	2006-10	2010-12	QBR76	QBR174	-	-
		2.7	Petrol	Front wheel drive (4x2)	Cabriolet	2007-07	2010-09	QBR76	QBR174	-	-
CITROEN	C4	1.6	Petrol	Front wheel drive (4x2)	Coupe	2004-09	2011-07	QBR109	-	-	-
		2.0	Petrol	Front wheel drive (4x2)	Coupe	2004-09	2010-12	QBR109	-	-	-
		2.0	Petrol	Front wheel drive (4x2)	Hatchback	2004-09	2007-07	QBR109	-	-	-
		2.0	Petrol	Front wheel drive (4x2)	Saloon	2004-09	2011-07	QBR109	-	-	-
	C5	2.0	Diesel	Front wheel drive (4x2)	Saloon	2008-02	S	-	QBR178	-	-
		2.0	Petrol	Front wheel drive (4x2)	Hatchback	2008-02	S	-	QBR178	-	-
		2.2	Diesel	Front wheel drive (4x2)	Estate	2004-09	2005-08	-	QBR178	-	-
		2.7	Diesel	Front wheel drive (4x2)	Saloon	2008-02	S	-	QBR178	-	-
		3.0	Diesel	Front wheel drive (4x2)	Saloon	2009-04	S	-	QBR178	-	-
	C5 Estate/ Break	2.0	Diesel	Front wheel drive (4x2)	Estate	2008-02	S	-	QBR178	-	-
		2.2	Diesel	Front wheel drive (4x2)	Estate	2006-04	2008-01	-	QBR178	-	-
		2.2	Diesel	Front wheel drive (4x2)	Hatchback	2004-09	2006-09	-	QBR178	-	-
		2.7	Diesel	Front wheel drive (4x2)	Estate	2008-02	S	-	QBR178	-	-
	3.0	Diesel	Front wheel drive (4x2)	Estate	2009-04	S	-	QBR178	-	-	
DAEWOO	Kalos	1.5	Petrol	Front wheel drive (4x2)	Hatchback	2002-11	2004-12	QBR89	-	-	-
		1.5	Petrol	Front wheel drive (4x2)	Saloon	2003-05	2004-12	QBR89	-	-	-
	La-s	1.5	Petrol	Front wheel drive (4x2)	Hatchback	1997-05	2002-12	QBR67	-	-	-

BRAKE PADS BRAKE ROTORS



Omnicraft™

Application Data For Domestic And Import Passenger Cars And Light/Medium Trucks

Make	Model	Stroke capacity (ltr)	Fuel Type	Drive (instigation) / Axle position	Body Sytle	Year (from)	Year (till)	Omnicraft Part Number Front Brake Pads	Omnicraft Part Number Rear Brake Pads	Omnicraft Part Number Front Brake Rotors	Omnicraft Part Number Rear Brake Rotors	
DAEWOO	La-s	1.5	Petrol	Front wheel drive (4x2)	Saloon	1997-04	2001-10	QBR67	-	-	-	
	Matiz	0.8	Petrol	Front wheel drive (4x2)	Hatchback	1998-09	2000-08	QBR67	-	-	-	
		0.8	Petrol	Front wheel drive (4x2)	Hatchback van	2000-09	2004-12	QBR67	-	-	-	
DAIHATSU	Sirion	1.3	Petrol	Front wheel drive (4x2)	Hatchback	2004-10	2014-03	QBR116	-	-	-	
DODGE (Chrysler)	Avenger	2.0	Diesel	Front wheel drive (4x2)	Saloon	2007-05	2011-12	QBR76	QBR166	-	-	
		2.0	Petrol	Front wheel drive (4x2)	Hatchback	2007-05	2011-12	QBR76	QBR166	-	-	
		2.4	Petrol	Front wheel drive (4x2)	Saloon	2007-06	2014-12	QBR76	QBR166	-	-	
	Caliber	1.8	Petrol	Front wheel drive (4x2)	Hatchback	2006-02	2011-11	QBR76	-	-	-	
		2.0	Diesel	Front wheel drive (4x2)	Hatchback	2006-06	2011-11	QBR76	-	-	-	
		2.0	Petrol	Front wheel drive (4x2)	Saloon	2006-02	2011-11	QBR76	-	-	-	
HOLDEN (GM)	Adventura	3.6	LPG (with or without Petrol)	4 Wheel drive (4x4)	Estate	2004-10	2007-12	QBR62	QBR157	-	-	
		3.6	Petrol	4 Wheel drive (4x4)	Combi flatbed	2006-02	2006-07	QBR62	QBR157	-	-	
		3.6	Petrol	4 Wheel drive (4x4)	Saloon	2005-03	2006-01	QBR62	QBR157	-	-	
		5.7	Petrol	4 Wheel drive (4x4)	Estate	2004-10	2007-12	QBR62	QBR157	-	-	
		5.7	Petrol	4 Wheel drive (4x4)	Saloon	2003-08	2007-12	QBR62	QBR157	-	-	
	Astra	1.6	Petrol	Front wheel drive (4x2)	Hatchback	2014-12	S	QBR118	QBR191	-	-	
		1.8	Petrol	Front wheel drive (4x2)	Cabriolet	2000-09	2004-09	QBR72 (or) QBR 83	QBR161	QBRR745	QBRR794	
		1.8	Petrol	Front wheel drive (4x2)	Estate	2007-04	2010-03	QBR102	QBR170	QBRR745	QBRR795	
		1.8	Petrol	Front wheel drive (4x2)	Hatchback	1998-02	2010-03	QBR72	QBR170	-	-	
		1.8	Petrol	Front wheel drive (4x2)	Saloon	1998-07	2004-09	QBR72	QBR170	-	-	
		1.9	Diesel	Front wheel drive (4x2)	Estate	2004-12	2010-03	QBR102	QBR170	-	-	
		1.9	Diesel	Front wheel drive (4x2)	Hatchback	2004-12	2010-03	QBR102	QBR170	-	-	
		2.0	Petrol	Front wheel drive (4x2)	Coupe	2005-03	2010-03	QBR102	QBR170	-	-	
		2.2	Petrol	Front wheel drive (4x2)	Multi purpose vehicle	2000-09	2004-07	QBR83	QBR 161 / QBR170	QBRR745	QBRR794	
		Astra Convertible	2.2	Petrol	Front wheel drive (4x2)	Cabriolet	2008-03	2010-03	QBR102	QBR170	QBRR745	QBRR795
			2.2	Petrol	Front wheel drive (4x2)	Hatchback	2002-06	2006-12	QBR83	QBR161	-	-
		Barina	1.4	Petrol	Front wheel drive (4x2)	Hatchback	2000-09	2003-12	QBR77	QBR167	QBRR744	QBRR794
	1.4		Petrol	Front wheel drive (4x2)	Hatchback	2013-07	S	-	QBR191	QBRR726	QBRR765	
	1.4		Petrol	Front wheel drive (4x2)	Van (cargo carriage)	2004-01	2005-02	QBR77	QBR167	-	-	
	1.6		Petrol	Front wheel drive (4x2)	Hatchback	2005-03	2012-06	QBR89	-	QBRR750	-	
	1.6		Petrol	Front wheel drive (4x2)	Hatchback	2011-11	S	-	-	QBRR726	-	
	1.6		Petrol	Front wheel drive (4x2)	Saloon	2005-03	2012-06	QBR89	-	QBRR750	-	
	Barina Spark	1.2	Petrol	Front wheel drive (4x2)	Hatchback	2010-10	S	-	-	QBRR750	-	
	Calais	3.6	LPG (with or without Petrol)	Rear wheel drive (4x2)	Combi flatbed	2008-07	2013-05	-	-	QBRR705	QBRR772	
		3.6	LPG (with or without Petrol)	Rear wheel drive (4x2)	Saloon	2006-07	2013-05	-	-	QBRR705	QBRR772	
		3.6	Petrol	Rear wheel drive (4x2)	Estate	2013-06	S	QBR123	QBR196	-	-	
		3.6	Petrol	Rear wheel drive (4x2)	Saloon	2009-09	2013-05	QBR92	QBR179	QBRR705	QBRR772	
		3.6	Petrol	Rear wheel drive (4x2)	Saloon	2013-06	S	QBR123	QBR196	-	-	
		6.0	Petrol	Rear wheel drive (4x2)	Combi flatbed	2013-06	S	QBR123	QBR196	QBRR716	QBRR774	
		6.0	Petrol	Rear wheel drive (4x2)	Estate	2013-06	S	QBR123	QBR196	QBRR716	QBRR774	
6.0		Petrol	Rear wheel drive (4x2)	Saloon	2006-07	2013-05	QBR92	QBR179	QBRR716	QBRR774		
Caprice	3.6	Petrol	Rear wheel drive (4x2)	Combi flatbed	2009-08	2013-08	QBR92	QBR179	-	-		
	3.6	Petrol	Rear wheel drive (4x2)	Combi flatbed	2013-05	2015-08	-	-	QBRR705	QBRR772		
	3.6	Petrol	Rear wheel drive (4x2)	Estate	2006-07	2009-01	QBR92	QBR179	QBRR705	QBRR772		
	3.6	Petrol	Rear wheel drive (4x2)	Estate	2012-01	2013-08	QBR92	QBR179	QBRR705	QBRR772		
	3.6	Petrol	Rear wheel drive (4x2)	Saloon	2003-09	2006-06	QBR62	QBR157	-	-		
	3.8	Petrol	Rear wheel drive (4x2)	Combi flatbed	2001-08	2003-04	QBR62	QBR157	-	-		
	3.8	Petrol	Rear wheel drive (4x2)	Saloon	1999-06	2004-07	QBR62	QBR157	-	-		
	5.7	Petrol	Rear wheel drive (4x2)	Combi flatbed	2000-10	2006-01	QBR62	QBR157	-	-		
	5.7	Petrol	Rear wheel drive (4x2)	Saloon	1999-06	2004-07	QBR62	QBR157	-	-		
	6.0	Petrol	Rear wheel drive (4x2)	Combi flatbed	2006-07	2009-01	QBR92	QBR179	QBRR716	QBRR774		

BRAKE PADS BRAKE ROTORS



Omnicraft™

Application Data For Domestic And Import Passenger Cars And Light/Medium Trucks

Make	Model	Stroke capacity (ltr)	Fuel Type	Drive (instigation) / Axle position	Body Sytle	Year (from)	Year (till)	Omnicraft Part Number Front Brake Pads	Omnicraft Part Number Rear Brake Pads	Omnicraft Part Number Front Brake Rotors	Omnicraft Part Number Rear Brake Rotors
HOLDEN (GM)	Caprice	6.0	Petrol	Rear wheel drive (4x2)	Combi flatbed	2013-05	2015-08	-	-	QBRR716	QBRR774
		6.0	Petrol	Rear wheel drive (4x2)	Saloon	2006-07	2013-08	QBR92	QBR179	QBRR716	QBRR774
	Captiva 5	2.4	Petrol	4 Wheel drive (4x4)	Sport Utility Vehicle	2009-12	2011-12	QBR110	QBR186	-	-
		2.4	Petrol	Front wheel drive (4x2)	Sport Utility Vehicle	2009-12	2011-12	QBR110	QBR186	-	-
	Captiva 7	2.0	Diesel	4 Wheel drive (4x4)	Sport Utility Vehicle	2007-03	2011-12	QBR110	QBR186	-	-
		2.0	Diesel	Front wheel drive (4x2)	Sport Utility Vehicle	2008-08	2011-12	QBR110	QBR186	-	-
		2.2	Diesel	4 Wheel drive (4x4)	Sport Utility Vehicle	2011-03	S	QBR110	QBR186	-	-
		2.2	Diesel	Front wheel drive (4x2)	Sport Utility Vehicle	2011-03	S	QBR110	QBR186	-	-
		2.4	Bio (etha-1) petrol or Metha-1	Front wheel drive (4x2)	Sport Utility Vehicle	2012-01	S	QBR110	QBR186	-	-
		3.0	Bio (etha-1) petrol or Metha-1	4 Wheel drive (4x4)	Sport Utility Vehicle	2012-03	S	QBR110	QBR186	QBRR713	QBRR775
		3.2	Petrol	4 Wheel drive (4x4)	Sport Utility Vehicle	2006-12	2011-12	QBR110	QBR186	-	-
	Colorado	2.4	Petrol	Rear wheel drive (4x2)	Chassis cabin	2008-03	2012-06	QBR107	-	-	-
		2.5	Diesel	4 Wheel drive (4x4)	Chassis cabin	2012-06	S	-	-	QBRR692	-
		2.8	Diesel	4 Wheel drive (4x4)	Chassis cabin	2012-06	S	QBR107	-	-	-
		2.8	Diesel	4 Wheel drive (4x4)	Pick up Truck	2012-06	S	QBR107	-	QBRR692	-
		2.8	Diesel	Rear wheel drive (4x2)	Pick up Truck	2012-06	S	QBR107	-	-	-
		2.8	Diesel	Rear wheel drive (4x2)	Sport Utility Vehicle	2012-06	S	QBR107	-	-	-
		3.0	Diesel	4 Wheel drive (4x4)	Chassis cabin	2008-03	2012-06	QBR107	-	-	-
		3.0	Diesel	4 Wheel drive (4x4)	Pick up Truck	2008-03	2012-06	QBR107	-	-	-
		3.0	Diesel	Rear wheel drive (4x2)	Chassis cabin	2008-03	2012-06	QBR107	-	-	-
		3.0	Diesel	Rear wheel drive (4x2)	Pick up Truck	2008-03	2012-06	QBR107	-	-	-
		3.6	LPG (with or without Petrol)	Rear wheel drive (4x2)	Combi flatbed	2008-03	2012-06	QBR107	-	-	-
	Colorado 7	2.8	Diesel	4 Wheel drive (4x4)	Chassis cabin	2012-06	2016-07	QBR107	-	-	-
		1.4	Petrol	Front wheel drive (4x2)	Hatchback	2005-04	2013-06	QBR77	QBR170	-	-
	Combo	1.6	Petrol	Front wheel drive (4x2)	Van (cargo carriage)	2002-09	2005-05	QBR77	QBR170	-	-
		3.0	Bio (etha-1) petrol or Metha-1	Rear wheel drive (4x2)	Saloon	2010-01	2013-05	QBR92	QBR179	-	-
	Commodore	3.0	Petrol	Rear wheel drive (4x2)	Combi flatbed	2010-09	2013-10	QBR92	QBR179	-	-
		3.0	Petrol	Rear wheel drive (4x2)	Estate	2009-09	2013-05	QBR92	QBR179	QBRR705	QBRR772
		3.0	Petrol	Rear wheel drive (4x2)	Estate	2013-05	2014-12	QBR92	QBR179	-	-
		3.0	Petrol	Rear wheel drive (4x2)	Saloon	2009-09	2013-05	QBR92	QBR179	QBRR705	QBRR772
		3.0	Petrol	Rear wheel drive (4x2)	Saloon	2013-05	2014-12	QBR123	QBR196	-	-
		3.0	Petrol	Rear wheel drive (4x2)	Saloon	2013-05	S	QBR123	QBR196	-	QBRR772
		3.6	LPG (with or without Petrol)	Rear wheel drive (4x2)	Combi flatbed	2004-09	2006-07	QBR62	QBR157	QBRR739	QBRR791
		3.6	LPG (with or without Petrol)	Rear wheel drive (4x2)	Combi flatbed	2007-09	2013-05	QBR92	QBR179	-	-
		3.6	LPG (with or without Petrol)	Rear wheel drive (4x2)	Combi flatbed	2013-05	S	QBR123	QBR196	-	-
		3.6	LPG (with or without Petrol)	Rear wheel drive (4x2)	Estate	2013-05	S	QBR123	QBR196	-	-
		3.6	LPG (with or without Petrol)	Rear wheel drive (4x2)	Saloon	2006-08	2013-05	QBR92	QBR179	-	-
		3.6	LPG (with or without Petrol)	Rear wheel drive (4x2)	Saloon	2013-05	S	QBR123	QBR196	-	-
		3.6	Petrol	Rear wheel drive (4x2)	Chassis cabin	2004-01	2006-07	QBR62	QBR157	QBRR739	QBRR791
		3.6	Petrol	Rear wheel drive (4x2)	Combi flatbed	2007-09	2013-05	QBR92	QBR179	-	-
		3.6	Petrol	Rear wheel drive (4x2)	Combi flatbed	2009-07	2013-05	QBR92	QBR179	QBRR705	QBRR772
		3.6	Petrol	Rear wheel drive (4x2)	Estate	2005-08	2006-07	QBR62	QBR157	-	-
3.6		Petrol	Rear wheel drive (4x2)	Estate	2006-08	2013-05	QBR92	QBR179	QBRR705	QBRR772	
3.6		Petrol	Rear wheel drive (4x2)	Estate	2007-09	2008-10	QBR92	QBR179	-	-	
3.6		Petrol	Rear wheel drive (4x2)	Estate	2007-08	2013-05	QBR92	QBR179	QBRR739	QBRR791	
3.6		Petrol	Rear wheel drive (4x2)	Saloon	2004-09	2006-06	QBR62	QBR157	QBRR739	QBRR791	
3.6	Petrol	Rear wheel drive (4x2)	Saloon	2006-08	2013-05	QBR92	QBR179	QBRR705	QBRR772		
3.6	Petrol	Rear wheel drive (4x2)	Saloon	2007-08	2008-10	QBR92	QBR179	QBRR739	QBRR791		
3.6	Petrol	Rear wheel drive (4x2)	Saloon	2013-05	S	QBR92	QBR179	QBRR705	QBRR772		
3.8	Petrol	Rear wheel drive (4x2)	Estate	2000-09	2004-08	QBR62	QBR157	-	-		

BRAKE PADS BRAKE ROTORS



Omnicraft™

Application Data For Domestic And Import Passenger Cars And Light/Medium Trucks

Make	Model	Stroke capacity (ltr)	Fuel Type	Drive (instigation) / Axle position	Body Sytle	Year (from)	Year (till)	Omnicraft Part Number Front Brake Pads	Omnicraft Part Number Rear Brake Pads	Omnicraft Part Number Front Brake Rotors	Omnicraft Part Number Rear Brake Rotors	
HOLDEN (GM)	Commodore	3.8	Petrol	Rear wheel drive (4x2)	Saloon	1997-09	2002-08	QBR62	QBR157	-	-	
		3.8	Petrol	Rear wheel drive (4x2)	Saloon	2002-09	2004-08	QBR62	QBR157	QBRR739	QBRR791	
		5.0	Petrol	Rear wheel drive (4x2)	Estate	1997-09	2000-12	QBR62	QBR157	-	-	
		5.0	Petrol	Rear wheel drive (4x2)	Saloon	1997-09	1999-06	QBR62	QBR157	-	-	
		5.7	Petrol	Rear wheel drive (4x2)	Combi flatbed	2002-09	2004-08	QBR62	QBR157	-	-	
		5.7	Petrol	Rear wheel drive (4x2)	Coupe	2000-12	2004-05	QBR62	QBR157	-	-	
		5.7	Petrol	Rear wheel drive (4x2)	Estate	2000-09	2006-02	QBR62	QBR157	-	-	
		5.7	Petrol	Rear wheel drive (4x2)	Saloon	1999-06	2000-08	QBR62	QBR157	-	-	
		5.7	Petrol	Rear wheel drive (4x2)	Saloon	2000-09	2002-09	QBR62	QBR157	QBRR739	QBRR791	
		5.7	Petrol	Rear wheel drive (4x2)	Saloon	2002-09	2005-12	QBR62	QBR157	-	-	
		6.0	Bio (etha-1) petrol or Metha-1	Rear wheel drive (4x2)	Saloon	2010-01	2013-05	QBR 86 & QBR 92	QBR179	-	-	
		6.0	Petrol	Rear wheel drive (4x2)	Combi flatbed	2007-09	2013-05	QBR 86 & QBR 92	QBR179	QBRR716	QBRR774	
		6.0	Petrol	Rear wheel drive (4x2)	Estate	2005-09	2006-07	QBR62	QBR157	-	-	
		6.0	Petrol	Rear wheel drive (4x2)	Estate	2007-08	2013-05	QBR 86 & QBR 92	QBR179	QBRR716	QBRR774	
		6.0	Petrol	Rear wheel drive (4x2)	Estate	2013-05	S	QBR123	QBR196	QBRR716	QBRR774	
		6.0	Petrol	Rear wheel drive (4x2)	Saloon	2005-11	2007-08	QBR62	QBR157	-	-	
		6.0	Petrol	Rear wheel drive (4x2)	Saloon	2006-07	2013-05	QBR92	QBR179	QBRR716	QBRR774	
		6.0	Petrol	Rear wheel drive (4x2)	Saloon	2013-05	S	QBR123	QBR196	QBRR716	QBRR774	
	6.2	Petrol	Rear wheel drive (4x2)	Combi flatbed	2015-09	S	QBR123	QBR196	-	-		
	6.2	Petrol	Rear wheel drive (4x2)	Saloon	2015-09	S	QBR123	QBR196	-	QBRR774		
	Commodore Ute	3.0	Petrol	Rear wheel drive (4x2)	Combi flatbed	2010-09	2013-12	QBR92	QBR179	-	-	
		3.6	Petrol	4 Wheel drive (4x4)	Combi flatbed	2006-02	2007-08	QBR62	QBR157	-	-	
		3.6	Petrol	Rear wheel drive (4x2)	Combi flatbed	2004-08	2006-07	QBR62	QBR157	-	-	
		3.6	Petrol	Rear wheel drive (4x2)	Pick up Truck	2008-01	2013-04	QBR92	QBR179	-	-	
		3.6	Petrol	Rear wheel drive (4x2)	Saloon	2009-01	2013-04	QBR92	QBR179	-	-	
		3.6	Petrol	Rear wheel drive (4x2)	Saloon	2013-05	S	QBR92	QBR179	QBRR705	QBRR772	
		6.0	Petrol	Rear wheel drive (4x2)	Combi flatbed	2007-10	2013-12	QBR92	QBR179	-	-	
		6.0	Petrol	Rear wheel drive (4x2)	Combi flatbed	2013-05	S	QBR123	QBR196	-	-	
		6.0	Petrol	Rear wheel drive (4x2)	Saloon	2007-10	2013-04	QBR92	QBR179	-	-	
		6.0	Petrol	Rear wheel drive (4x2)	Saloon	2013-05	S	QBR123	QBR196	-	-	
		6.2	Petrol	Rear wheel drive (4x2)	Estate	2015-12	S	QBR123	QBR196	-	-	
		Crewman	3.6	Petrol	Rear wheel drive (4x2)	Combi flatbed	2006-09	2007-12	QBR62	QBR157	-	-
			3.6	Petrol	Rear wheel drive (4x2)	Pick up Truck	2004-08	2006-09	QBR62	QBR157	-	-
			3.8	Petrol	Rear wheel drive (4x2)	Estate	2003-09	2004-07	QBR62	QBR157	-	-
			5.7	Petrol	4 Wheel drive (4x4)	Combi flatbed	2003-09	2004-07	QBR62	QBR157	-	-
			5.7	Petrol	4 Wheel drive (4x4)	Saloon	2004-08	2006-02	QBR62	QBR157	-	-
			5.7	Petrol	Rear wheel drive (4x2)	Coupe	2003-09	2004-07	QBR62	QBR157	-	-
			5.7	Petrol	Rear wheel drive (4x2)	Saloon	2004-08	2006-02	QBR62	QBR157	-	-
	6.0		Petrol	4 Wheel drive (4x4)	Combi flatbed	2006-02	2006-07	QBR62	QBR157	-	-	
	Cruze	1.4	Petrol	Front wheel drive (4x2)	Hatchback	2011-03	S	QBR118	QBR191	QBRR726	QBRR765	
		1.4	Petrol	Front wheel drive (4x2)	Saloon	2011-11	S	QBR118	QBR191	QBRR726	QBRR765	
		1.6	Petrol	Front wheel drive (4x2)	Hatchback	2013-04	S	QBR118	QBR191	QBRR726	QBRR765	
		1.6	Petrol	Front wheel drive (4x2)	Saloon	2013-04	S	QBR118	QBR191	QBRR726	QBRR765	
		1.8	Petrol	Front wheel drive (4x2)	Estate	2012-06	S	QBR118	QBR191	QBRR726	QBRR765	
		1.8	Petrol	Front wheel drive (4x2)	Hatchback	2011-11	S	-	QBR191	-	-	
		1.8	Petrol	Front wheel drive (4x2)	Saloon	2009-06	2013-05	QBR118	QBR191	-	-	
1.8		Petrol	Front wheel drive (4x2)	Saloon	2013-05	S	QBR118	QBR191	QBRR726	QBRR765		
2.0		Diesel	Front wheel drive (4x2)	Estate	2012-06	S	-	QBR191	-	-		
2.0		Diesel	Front wheel drive (4x2)	Hatchback	2011-11	S	-	QBR191	-	-		
2.0	Diesel	Front wheel drive (4x2)	Saloon	2009-06	2011-03	QBR118	QBR191	QBRR726	QBRR765			

BRAKE PADS BRAKE ROTORS



Omnicraft™

Application Data For Domestic And Import Passenger Cars And Light/Medium Trucks

Make	Model	Stroke capacity (ltr)	Fuel Type	Drive (instigation) / Axle position	Body Sytle	Year (from)	Year (till)	Omnicraft Part Number Front Brake Pads	Omnicraft Part Number Rear Brake Pads	Omnicraft Part Number Front Brake Rotors	Omnicraft Part Number Rear Brake Rotors	
HOLDEN (GM)	Cruze	2.0	Diesel	Front wheel drive (4x2)	Saloon	2011-03	S	QBR118	QBR191	-	-	
		2.0	Diesel	Front wheel drive (4x2)	Saloon	2011-03	S	-	QBR191	QBRR726	QBRR765	
	Frontera	2.0	Petrol	4 Wheel drive (4x4)	Terrain cab wagon closed	1995-10	1999-03	QBR198	-	-	-	
		2.2	Petrol	4 Wheel drive (4x4)	Terrain cab wagon closed	1999-02	2002-07	QBR198	-	-	-	
		3.2	Petrol	4 Wheel drive (4x4)	Pick up Truck	1998-08	2001-10	QBR198	-	-	-	
	Insignia	2.8	Petrol	4 Wheel drive (4x4)	Saloon	2015-01	S	QBR86	-	-	-	
	Jackaroo	3.0	Diesel	4 Wheel drive (4x4)	Terrain cab wagon closed	1998-03	2004-10	QBR198	-	-	-	
		3.1	Diesel	4 Wheel drive (4x4)	Terrain cab wagon closed	1991-10	1998-02	QBR198	-	-	-	
		3.2	Petrol	4 Wheel drive (4x4)	Chassis cabin	1991-10	1998-02	QBR198	-	-	-	
		3.5	Petrol	4 Wheel drive (4x4)	Pick up Truck	1998-03	2004-10	QBR198	-	-	-	
	Monaro	3.8	Petrol	Rear wheel drive (4x2)	Coupe	2001-05	2003-08	QBR62	QBR157	-	-	
		5.7	Petrol	Rear wheel drive (4x2)	Combi flatbed	2001-12	2003-01	QBR62	QBR157	-	-	
		5.7	Petrol	Rear wheel drive (4x2)	Estate	2004-09	2006-07	QBR62	QBR157	-	-	
	Rodeo	2.8	Diesel	4 Wheel drive (4x4)	Pick up Truck	1990-05	2003-02	QBR198	-	-	-	
		2.8	Diesel	Rear wheel drive (4x2)	Chassis cabin	1990-05	2003-02	QBR198	-	-	-	
		3.0	Diesel	Rear wheel drive (4x2)	Pick up Truck	2001-12	2003-02	QBR198	-	-	-	
		3.0	Diesel	Rear wheel drive (4x2)	Pick up Truck	2003-02	2007-01	-	-	QBRR707	QBRR755	
		3.2	Petrol	4 Wheel drive (4x4)	Chassis cabin	1998-02	2003-02	QBR198	-	-	-	
		3.2	Petrol	4 Wheel drive (4x4)	Pick up Truck	1998-02	2003-02	QBR198	-	-	-	
		3.2	Petrol	Rear wheel drive (4x2)	Terrain cab wagon closed	1998-02	2003-02	QBR198	-	-	-	
		3.5	Petrol	4 Wheel drive (4x4)	Pick up Truck	2003-02	2005-12	QBR198	-	-	-	
		3.5	Petrol	Rear wheel drive (4x2)	Terrain cab wagon closed	2002-02	2008-10	QBR198	-	-	-	
		3.6	Petrol	Rear wheel drive (4x2)	Combi flatbed	2003-02	2008-06	QBR198	-	-	-	
	Statesman	3.6	LPG (with or without Petrol)	Rear wheel drive (4x2)	Saloon	2006-07	2010-12	QBR92	QBR179	QBRR705	QBRR772	
		3.6	Petrol	Rear wheel drive (4x2)	Saloon	2004-08	2006-07	QBR62	QBR157	-	-	
		3.6	Petrol	Rear wheel drive (4x2)	Saloon	2006-07	2010-12	QBR92	QBR179	-	-	
		3.8	Petrol	Rear wheel drive (4x2)	Combi flatbed	1999-06	2003-04	QBR62	QBR157	-	-	
		3.8	Petrol	Rear wheel drive (4x2)	Saloon	2001-08	2003-04	QBR62	QBR157	-	-	
		3.8	Petrol	Rear wheel drive (4x2)	Saloon	2003-05	2004-07	QBR62	QBR157	QBRR739	QBRR791	
		5.7	Petrol	Rear wheel drive (4x2)	Combi flatbed	2002-11	2003-04	QBR62	QBR157	-	-	
		5.7	Petrol	Rear wheel drive (4x2)	Coupe	1999-06	2002-11	QBR62	QBR157	-	-	
		5.7	Petrol	Rear wheel drive (4x2)	Saloon	2004-07	2006-06	QBR62	QBR157	-	-	
		6.0	Bio (etha-1) petrol or Metha-1	Rear wheel drive (4x2)	Combi flatbed	2006-07	2010-12	QBR92	QBR179	-	-	
	Tigra	1.8	Petrol	Front wheel drive (4x2)	Estate	2004-06	2007-12	QBR77	QBR167	-	-	
		Vectra	2.2	Petrol	Front wheel drive (4x2)	Cabriolet	2003-05	2006-12	-	QBR171	-	-
			2.2	Petrol	Front wheel drive (4x2)	Hatchback	2003-05	2006-12	-	QBR171	-	-
			3.2	Petrol	Front wheel drive (4x2)	Hatchback	2003-05	2006-12	-	QBR178	-	-
	Zafira	3.2	Petrol	Front wheel drive (4x2)	Saloon	2003-05	2006-12	-	QBR178	-	-	
		2.2	Petrol	Front wheel drive (4x2)	Saloon	2001-06	2006-02	QBR102	QBR161	-	-	
	HONDA	Accord	2.2	Petrol	Front wheel drive (4x2)	Saloon	1993-10	1997-12	-	QBR156	-	-
			2.4	Petrol	Front wheel drive (4x2)	Saloon	2003-01	2006-03	QBR69	QBR156	QBRR742	QBRR801
			2.4	Petrol	Front wheel drive (4x2)	Saloon	2006-03	2008-01	QBR69	QBR156	-	-
2.4			Petrol	Front wheel drive (4x2)	Saloon	2008-06	2010-12	QBR84	-	-	-	
2.4			Petrol	Front wheel drive (4x2)	Saloon	2008-07	2015-06	QBR120	QBR176	QBRR715	QBRR760	
3.0			Petrol	Front wheel drive (4x2)	Saloon	2003-08	2008-05	QBR69	QBR156	-	-	
3.5			Petrol	Front wheel drive (4x2)	Saloon	2008-06	2012-09	QBR84	-	-	QBRR760	
3.5		Petrol	Front wheel drive (4x2)	Saloon	2012-11	S	QBR120	QBR176	-	-		
Accord Euro		2.4	Petrol	Front wheel drive (4x2)	Saloon	2008-06	2015-06	QBR120	QBR176	-	-	
City		1.5	Petrol	Front wheel drive (4x2)	Hatchback	2014-01	S	-	QBR152	QBRR684	-	
	1.5	Petrol	Front wheel drive (4x2)	Saloon	2009-07	2013-11	-	QBR152	QBRR684	-		

BRAKE PADS BRAKE ROTORS



Omnicraft™

Application Data For Domestic And Import Passenger Cars And Light/Medium Trucks

Make	Model	Stroke capacity (ltr)	Fuel Type	Drive (instigation) / Axle position	Body Sytle	Year (from)	Year (till)	Omnicraft Part Number Front Brake Pads	Omnicraft Part Number Rear Brake Pads	Omnicraft Part Number Front Brake Rotors	Omnicraft Part Number Rear Brake Rotors
HONDA	Civic	1.3	Hybrid-pet-rol	Front wheel drive (4x2)	Saloon	2003-01	2005-12	QBR84	QBR151	-	-
		1.5	Hybrid-pet-rol	Front wheel drive (4x2)	Saloon	2012-01	S	QBR69	-	-	-
		1.5	Petrol	Front wheel drive (4x2)	Saloon	1991-10	1995-12	QBR59	QBR152	-	-
		1.6	Petrol	Front wheel drive (4x2)	Hatchback	1991-10	1995-11	QBR59	QBR152	-	-
		1.6	Petrol	Front wheel drive (4x2)	Hatchback	1995-11	2001-02	QBR60	-	-	-
		1.6	Petrol	Front wheel drive (4x2)	Saloon	1991-10	1993-10	QBR60	QBR152	-	-
		1.7	Petrol	Front wheel drive (4x2)	Saloon	2002-03	2005-08	QBR84	QBR151	QBRR684	-
		1.8	Petrol	Front wheel drive (4x2)	Hatchback	2005-09	2011-12	-	-	QBRR742	QBRR766
		1.8	Petrol	Front wheel drive (4x2)	Hatchback	2012-02	S	-	QBR195	-	-
		1.8	Petrol	Front wheel drive (4x2)	Saloon	2005-09	2013-05	-	QBR195	QBRR742	QBRR766
		1.8	Petrol	Front wheel drive (4x2)	Saloon	2011-09	S	-	QBR195	QBRR742	QBRR766
		2.0	Petrol	Front wheel drive (4x2)	Hatchback	2001-07	2005-09	QBR84	QBR151	-	-
	2.0	Petrol	Front wheel drive (4x2)	Hatchback	2006-12	2011-12	-	QBR195	-	-	
	2.0	Petrol	Front wheel drive (4x2)	Saloon	2006-02	2012-02	-	QBR195	QBRR742	QBRR766	
	Civic CRX	1.6	Petrol	Front wheel drive (4x2)	Coupe	1987-10	1992-05	-	QBR152	-	-
	Concerto	1.6	Petrol	Front wheel drive (4x2)	Saloon	1988-11	1995-03	-	QBR152	-	-
	CR-V	1.6	Diesel	4 Wheel drive (4x4)	Sport Utility Vehicle	2015-02	S	QBR108	QBR176	-	-
		2.0	Petrol	Front wheel drive (4x2)	Sport Utility Vehicle	2012-10	2017-04	QBR108	QBR176	QBRR712	-
		2.2	Diesel	4 Wheel drive (4x4)	Sport Utility Vehicle	2012-10	S	QBR108	-	-	-
		2.4	Petrol	4 Wheel drive (4x4)	Sport Utility Vehicle	2007-04	2012-06	QBR108	QBR176	QBRR712	-
	CRX	2.4	Petrol	Front wheel drive (4x2)	Sport Utility Vehicle	2007-04	2012-06	QBR108	QBR176	QBRR712	-
	CRX	1.6	Petrol	Front wheel drive (4x2)	Targa	1992-06	1998-04	QBR60	QBR152	-	-
	Insight	1.3	Hybrid-pet-rol	Front wheel drive (4x2)	Hatchback	2009-04	S	-	-	QBRR684	-
	Integra	1.8	Petrol	Front wheel drive (4x2)	Coupe	1993-07	2001-11	-	QBR152	-	-
		1.8	Petrol	Front wheel drive (4x2)	Coupe	1997-10	2001-08	-	QBR156	-	-
		1.8	Petrol	Front wheel drive (4x2)	Hatchback	1989-06	1993-08	-	QBR152	-	-
	Jazz	1.3	Hybrid-pet-rol	Front wheel drive (4x2)	Hatchback	2011-04	2015-12	QBR59	QBR156	-	-
		1.3	Petrol	Front wheel drive (4x2)	Hatchback	2002-01	2007-09	QBR59	-	QBRR665	-
		1.4	Petrol	Front wheel drive (4x2)	Hatchback	2008-07	2015-12	QBR60	QBR152	QBRR684	QBRR664
		1.5	Petrol	Front wheel drive (4x2)	Hatchback	2002-04	2008-07	QBR59	QBR156	QBRR665	QBRR664
	Legend	1.5	Petrol	Front wheel drive (4x2)	Saloon	2008-07	2015-12	QBR60	QBR152	QBRR684	QBRR664
		2.7	Petrol	Front wheel drive (4x2)	Coupe	1987-05	1990-12	-	QBR151	-	-
		2.7	Petrol	Front wheel drive (4x2)	Saloon	1989-01	1990-12	-	QBR151	-	-
		3.2	Petrol	Front wheel drive (4x2)	Coupe	1991-01	1995-12	-	QBR156	-	-
3.2		Petrol	Front wheel drive (4x2)	Saloon	1991-01	1995-12	-	QBR156	-	-	
Odyssey	3.5	Petrol	Front wheel drive (4x2)	Saloon	1996-01	1997-10	-	QBR156	-	-	
	2.4	Petrol	Front wheel drive (4x2)	Multi purpose vehicle	2004-09	2013-11	QBR69	-	-	-	
Prelude	2.4	Petrol	Front wheel drive (4x2)	Multi purpose vehicle	2013-12	S	QBR108	-	-	-	
Prelude	2.0	Petrol	Front wheel drive (4x2)	Coupe	1987-10	1991-12	-	QBR152	-	-	
S2000	2.0	Petrol	Rear wheel drive (4x2)	Cabriolet	1999-06	2009-06	-	QBR195	-	-	
Shuttle	2.2	Petrol	Front wheel drive (4x2)	Multi purpose vehicle	1995-03	1998-02	-	QBR156	-	-	
HYUNDAI	Accent	1.5	Petrol	Front wheel drive (4x2)	Hatchback	2000-06	2002-12	QBR58	-	QBRR741	-
		1.6	Petrol	Front wheel drive (4x2)	Hatchback	2002-12	2010-11	QBR58	-	-	-
		1.6	Petrol	Front wheel drive (4x2)	Saloon	2001-01	2005-12	QBR58	QBR189	-	-
		1.6	Petrol	Front wheel drive (4x2)	Saloon	2005-11	2010-11	QBR58	QBR189	QBRR707	QBRR755
	Coupe	1.8	Petrol	Front wheel drive (4x2)	Coupe	1996-07	2002-04	QBR57	QBR153	-	-
		2.0	Petrol	Front wheel drive (4x2)	Coupe	1996-04	2002-01	QBR57	QBR153	-	-
	Elantra	1.8	Petrol	Front wheel drive (4x2)	Saloon	2011-01	2015-08	-	-	QBRR731	QBRR768
		2.0	Petrol	Front wheel drive (4x2)	Coupe	2000-06	2003-07	QBR57	QBR153	-	-
		2.0	Petrol	Front wheel drive (4x2)	Estate	2000-06	2006-07	QBR57	QBR153	-	-
	2.0	Petrol	Front wheel drive (4x2)	Hatchback	2006-06	2011-05	QBR82	QBR164	-	-	

BRAKE PADS BRAKE ROTORS



Omnicraft™

Application Data For Domestic And Import Passenger Cars And Light/Medium Trucks

Make	Model	Stroke capacity (ltr)	Fuel Type	Drive (instigation) / Axle position	Body Sytle	Year (from)	Year (till)	Omnicraft Part Number Front Brake Pads	Omnicraft Part Number Rear Brake Pads	Omnicraft Part Number Front Brake Rotors	Omnicraft Part Number Rear Brake Rotors
HYUNDAI	Elantra	2.0	Petrol	Front wheel drive (4x2)	Saloon	2000-06	2006-08	QBR57	QBR153	QBRR738	QBRR790
		2.0	Petrol	Front wheel drive (4x2)	Saloon	2006-06	2010-05	-	-	QBRR738	QBRR790
		2.0	Petrol	Front wheel drive (4x2)	Saloon	2015-10	S	-	-	QBRR731	QBRR768
	Elantra Lavita	1.8	Petrol	Front wheel drive (4x2)	Multi purpose vehicle	2000-07	2010-08	QBR57	-	-	-
	Excel	1.5	Petrol	Front wheel drive (4x2)	Hatchback	1985-10	1989-09	QBR58	-	-	-
		1.5	Petrol	Front wheel drive (4x2)	Hatchback	1994-10	2000-01	QBR58	-	-	-
		1.5	Petrol	Front wheel drive (4x2)	Saloon	1989-09	1991-08	QBR58	-	-	-
	Getz	1.5	Petrol	Front wheel drive (4x2)	Saloon	1994-10	2000-01	QBR58	-	-	-
		1.3	Petrol	Front wheel drive (4x2)	Hatchback	2002-09	2005-09	QBR58	QBR164	-	-
		1.4	Petrol	Front wheel drive (4x2)	Hatchback	2005-08	2011-12	QBR58	QBR164	QBRR748	QBRR755
		1.5	Petrol	Front wheel drive (4x2)	Hatchback	2002-05	2006-10	QBR58	QBR164	QBRR748	QBRR755
	Grandeur	1.6	Petrol	Front wheel drive (4x2)	Hatchback	2005-08	2012-12	QBR58	QBR164	QBRR748	QBRR755
		2.2	Diesel	Front wheel drive (4x2)	Saloon	2006-05	2010-10	-	QBR164	-	-
		3.0	Petrol	Front wheel drive (4x2)	Saloon	1998-12	2005-12	-	QBR164	-	-
	i20	3.8	Petrol	Front wheel drive (4x2)	Saloon	2005-06	2011-12	-	QBR164	-	-
		1.4	Petrol	Front wheel drive (4x2)	Hatchback	2008-09	2014-08	QBR97	QBR189	QBRR707	QBRR755
		1.6	Petrol	Front wheel drive (4x2)	Hatchback	2008-12	2014-08	QBR97	QBR189	-	-
		1.6	Diesel	Front wheel drive (4x2)	Estate	2012-09	S	QBR91	QBR189	-	-
		1.6	Diesel	Front wheel drive (4x2)	Hatchback	2007-06	2011-11	QBR91	QBR189	QBRR711	QBRR758
		1.6	Diesel	Front wheel drive (4x2)	Hatchback	2011-11	S	QBR91	QBR189	QBRR701	-
	i30	1.6	Petrol	Front wheel drive (4x2)	Estate	2012-06	S	-	-	QBRR701	QBRR768
		1.6	Petrol	Front wheel drive (4x2)	Hatchback	2007-06	2012-12	QBR91	QBR189	QBRR711	QBRR758
		1.6	Petrol	Front wheel drive (4x2)	Hatchback	2015-01	S	-	-	QBRR731	QBRR768
		1.8	Petrol	Front wheel drive (4x2)	Hatchback	2012-01	S	-	-	QBRR711	QBRR768
		2.0	Petrol	Front wheel drive (4x2)	Hatchback	2007-06	2012-12	QBR91	QBR189	QBRR711	QBRR758
		2.0	Petrol	Front wheel drive (4x2)	Hatchback	2014-01	S	-	-	QBRR731	QBRR768
	i30 CW	2.0	Petrol	Front wheel drive (4x2)	Saloon	2013-08	S	-	-	QBRR731	QBRR768
		1.6	Diesel	Front wheel drive (4x2)	Hatchback	2008-02	2012-06	-	-	QBRR711	QBRR758
		2.0	Petrol	Front wheel drive (4x2)	Hatchback	2008-02	2012-06	QBR91	QBR189	QBRR711	QBRR758
	i40	1.7	Diesel	Front wheel drive (4x2)	Estate	2011-07	S	QBR121	-	-	-
		2.0	Petrol	Front wheel drive (4x2)	Estate	2011-07	S	QBR121	-	QBRR701	-
		2.0	Petrol	Front wheel drive (4x2)	Saloon	2011-10	S	-	-	QBRR701	-
	i45	2.0	Petrol	Front wheel drive (4x2)	Sport Utility Vehicle	2012-03	S	-	-	QBRR701	-
		2.0	Petrol	Front wheel drive (4x2)	Sport Utility Vehicle	2011-01	2014-12	-	QBR189	QBRR711	QBRR758
	iLoad	2.4	Petrol	Front wheel drive (4x2)	Saloon	2010-01	2014-12	QBR121	-	QBRR701	-
		2.4	Petrol	Rear wheel drive (4x2)	Van (cargo carriage)	2008-02	S	QBR115	QBR190	QBRR724	QBRR778
	iX35	2.5	Diesel	Rear wheel drive (4x2)	Van (cargo carriage)	2008-02	S	QBR115	QBR190	-	-
		2.0	Diesel	4 Wheel drive (4x4)	Sport Utility Vehicle	2009-08	2015-12	QBR121	-	QBRR701	QBRR803
		2.0	Petrol	Front wheel drive (4x2)	Hatchback	2013-08	2015-12	-	QBR189	QBRR711	QBRR758
		2.0	Petrol	Front wheel drive (4x2)	Saloon	2009-08	2013-07	-	QBR189	QBRR711	QBRR758
		2.4	Petrol	4 Wheel drive (4x4)	Sport Utility Vehicle	2009-08	2013-10	QBR121	QBR189	QBRR701	QBRR803
		2.4	Petrol	4 Wheel drive (4x4)	Sport Utility Vehicle	2013-10	2015-06	-	-	QBRR701	QBRR803
Lantra	1.6	Petrol	Front wheel drive (4x2)	Saloon	1990-12	1995-05	QBR57	QBR153	-	-	
	1.8	Petrol	Front wheel drive (4x2)	Saloon	1990-10	2000-05	QBR57	QBR153	-	-	
	2.0	Petrol	Front wheel drive (4x2)	Saloon	1997-04	2000-05	QBR57	QBR153	-	-	
Lantra Estate/Wagon	2.0	Petrol	Front wheel drive (4x2)	Estate	1996-12	2000-05	QBR57	QBR153	-	-	
Lavita	1.8	Petrol	Front wheel drive (4x2)	Multi purpose vehicle	2000-07	2010-08	QBR57	-	-	-	
	1.5	Petrol	Front wheel drive (4x2)	Hatchback	1985-10	1994-08	QBR58	-	-	-	
Pony	1.5	Petrol	Front wheel drive (4x2)	Saloon	1989-09	1994-08	QBR58	-	-	-	
	1.5	Petrol	Front wheel drive (4x2)	Coupe	1990-09	1994-09	QBR58	-	-	-	
Santa Fe	2.4	Petrol	4 Wheel drive (4x4)	Sport Utility Vehicle	2000-08	2005-12	-	QBR164	-	-	

BRAKE PADS BRAKE ROTORS



Omnicraft™

Application Data For Domestic And Import Passenger Cars And Light/Medium Trucks

Make	Model	Stroke capacity (ltr)	Fuel Type	Drive (instigation) / Axle position	Body Sytle	Year (from)	Year (till)	Omnicraft Part Number Front Brake Pads	Omnicraft Part Number Rear Brake Pads	Omnicraft Part Number Front Brake Rotors	Omnicraft Part Number Rear Brake Rotors
HYUNDAI	Santa Fe	2.7	Petrol	4 Wheel drive (4x4)	Sport Utility Vehicle	2005-11	2012-10	-	QBR164	-	-
		3.3	Petrol	Front wheel drive (4x2)	Saloon	2007-06	2008-11	-	-	QBRR710	QBRR757
	Scoupe	1.5	Petrol	Front wheel drive (4x2)	Saloon	1990-03	1992-12	QBR58	QBR153	-	-
	Sonata	2.0	Petrol	Front wheel drive (4x2)	Saloon	1993-06	1998-06	QBR57	-	-	-
		2.0	Petrol	Front wheel drive (4x2)	Saloon	1998-06	2001-05	QBR57	QBR164	-	-
		2.4	Petrol	Front wheel drive (4x2)	Saloon	1988-09	1992-02	QBR57	-	-	-
		2.4	Petrol	Front wheel drive (4x2)	Saloon	2001-10	2005-05	QBR57	QBR164	-	-
		2.4	Petrol	Front wheel drive (4x2)	Saloon	2005-01	2010-12	QBR82	QBR164	-	-
		2.7	Petrol	Front wheel drive (4x2)	Saloon	2001-10	2005-12	QBR57	QBR164	-	-
		2.7	Petrol	Front wheel drive (4x2)	Sport Utility Vehicle	2001-10	2005-12	QBR57	QBR164	-	-
		3.0	Petrol	Front wheel drive (4x2)	Saloon	1990-04	1998-12	QBR57	-	-	-
	3.3	Petrol	Front wheel drive (4x2)	Saloon	2005-05	2010-12	-	-	QBRR701	-	
	3.3	Petrol	Front wheel drive (4x2)	Sport Utility Vehicle	2005-01	2010-12	-	QBR164	QBRR701	-	
	Terracan	3.5	Petrol	4 Wheel drive (4x4)	Sport Utility Vehicle	2002-10	2007-12	-	QBR164	-	-
	Tiburon	2.0	Petrol	Front wheel drive (4x2)	Sport Utility Vehicle	2002-02	2004-12	QBR82	QBR153	-	-
		2.7	Petrol	Front wheel drive (4x2)	Coupe	2002-02	2008-12	QBR82	QBR153	QBRR711	-
Trajjet	2.7	Petrol	Front wheel drive (4x2)	Multi purpose vehicle	2000-02	2008-07	-	QBR164	-	-	
Tucson	2.0	Petrol	Front wheel drive (4x2)	Saloon	2004-06	2010-03	QBR82	QBR164 / QBR189	QBRR701	QBRR803	
	2.7	Petrol	4 Wheel drive (4x4)	Saloon	2004-08	2010-03	QBR82	QBR164	QBRR711	QBRR803	
Veloster	1.6	Petrol	Front wheel drive (4x2)	Coupe	2011-02	S	-	-	QBRR731	QBRR768	
INFINITI	M35h	3.5	Hybrid-petrol	Rear wheel drive (4x2)	Saloon	2011-04	S	-	QBR169	-	-
ISUZU (GM)	D-Max	3.0	Diesel	4 Wheel drive (4x4)	Chassis cabin	2007-01	2010-12	QBR107	-	-	-
		3.0	Diesel	4 Wheel drive (4x4)	Chassis cabin	2012-06	S	QBR107	-	QBRR692	-
		3.0	Diesel	4 Wheel drive (4x4)	Pick up Truck	2006-10	2012-10	QBR107	-	QBRR692	-
	MU	2.6	Petrol	4 Wheel drive (4x4)	Terrain cab closed	1989-05	1993-10	QBR198	-	-	-
		3.0	Diesel	4 Wheel drive (4x4)	Terrain cab wagon closed	1998-06	2002-08	QBR198	-	-	-
		3.1	Diesel	4 Wheel drive (4x4)	Terrain cab closed	1993-08	1998-05	QBR198	-	-	-
		3.2	Petrol	4 Wheel drive (4x4)	Terrain cab wagon closed	1998-06	2002-08	QBR198	-	-	-
	VehiCross (Vx)	3.2	Petrol	4 Wheel drive (4x4)	Sport Utility Vehicle	1997-06	2000-12	QBR198	-	-	-
	Wizard	3.0	Diesel	4 Wheel drive (4x4)	Terrain cab wagon closed	1998-06	2002-08	QBR198	-	-	-
		3.1	Diesel	4 Wheel drive (4x4)	Terrain cab wagon closed	1995-12	2000-05	QBR198	-	-	-
3.2		Petrol	4 Wheel drive (4x4)	Terrain cab wagon closed	1998-06	2002-08	QBR198	-	-	-	
JEEP (Chrysler)	Compass	2.0	Diesel	4 Wheel drive (4x4)	Sport Utility Vehicle	2007-02	S	QBR76	QBR166	-	-
		2.0	Petrol	Front wheel drive (4x2)	Sport Utility Vehicle	2011-05	S	-	-	QBRR719	QBRR763
		2.4	Petrol	4 Wheel drive (4x4)	Sport Utility Vehicle	2007-02	S	QBR76	QBR166	QBRR719	QBRR763
	Grand Cherokee	5.7	Petrol	4 Wheel drive (4x4)	Sport Utility Vehicle	2010-11	S	-	-	QBRR730	-
	Patriot	2.0	Diesel	4 Wheel drive (4x4)	Terrain cab wagon closed	2007-02	S	QBR76	-	-	-
		2.0	Petrol	Front wheel drive (4x2)	Terrain cab wagon closed	2007-01	S	QBR76	-	-	-
		2.4	Petrol	4 Wheel drive (4x4)	Terrain cab wagon closed	2007-01	S	QBR76	-	QBRR719	QBRR763
2.4	Petrol	Front wheel drive (4x2)	Terrain cab wagon closed	2007-02	S	QBR76	-	-	-		
KIA	Carnival	2.7	Petrol	Front wheel drive (4x2)	Multi purpose vehicle	2006-09	2015-06	QBR115	QBR190	QBRR708	QBRR756
		2.9	Diesel	Front wheel drive (4x2)	Multi purpose vehicle	2006-09	2015-06	QBR115	QBR190	-	-
	Cerato	1.6	Petrol	Front wheel drive (4x2)	Hatchback	2009-06	2014-02	-	QBR153	-	-
		1.8	Petrol	Front wheel drive (4x2)	Hatchback	2013-04	S	-	-	QBRR731	QBRR768
		1.8	Petrol	Front wheel drive (4x2)	Saloon	2013-06	S	-	-	QBRR731	QBRR768
		2.0	Petrol	Front wheel drive (4x2)	Coupe	2010-03	2013-06	-	-	QBRR711	-
		2.0	Petrol	Front wheel drive (4x2)	Hatchback	2013-04	S	-	-	QBRR731	QBRR768
		2.0	Petrol	Front wheel drive (4x2)	Saloon	2004-04	2007-01	-	QBR189	-	-
		2.0	Petrol	Front wheel drive (4x2)	Saloon	2009-07	2013-06	-	QBR153	QBRR711	-
2.0	Petrol	Front wheel drive (4x2)	Saloon	2013-04	S	-	-	QBRR731	QBRR768		
2.0	Petrol	Front wheel drive (4x2)	Sport Utility Vehicle	2013-06	S	-	-	QBRR731	QBRR768		

BRAKE PADS BRAKE ROTORS



Omnicraft™

Application Data For Domestic And Import Passenger Cars And Light/Medium Trucks

Make	Model	Stroke capacity (ltr)	Fuel Type	Drive (instigation) / Axle position	Body Sytle	Year (from)	Year (till)	Omnicraft Part Number Front Brake Pads	Omnicraft Part Number Rear Brake Pads	Omnicraft Part Number Front Brake Rotors	Omnicraft Part Number Rear Brake Rotors	
KIA	Cerato Koup	1.6	Petrol	Front wheel drive (4x2)	Coupe	2014-09	S	-	-	QBRR701	QBRR768	
		2.0	Petrol	Front wheel drive (4x2)	Hatchback	2009-06	2013-06	-	-	QBRR711	-	
		2.0	Petrol	Front wheel drive (4x2)	Sport Utility Vehicle		2014-09	S	-	-	QBRR731	QBRR768
	Grand Carnival	2.9	Diesel	Front wheel drive (4x2)	Multi purpose vehicle		2005-09	2015-06	QBR115	QBR190	QBRR708	QBRR756
		3.5	Petrol	Front wheel drive (4x2)	Multi purpose vehicle		2010-06	2015-06	-	-	QBRR708	QBRR756
		3.8	Petrol	Front wheel drive (4x2)	Multi purpose vehicle		2005-09	2015-06	-	-	QBRR708	QBRR756
	Magentis	2.4	Petrol	Front wheel drive (4x2)	Saloon		2005-10	2010-12	QBR82	QBR164	-	-
		2.7	Petrol	Front wheel drive (4x2)	Saloon		2005-06	2010-12	QBR82	QBR164	-	-
		2.7	Petrol	Front wheel drive (4x2)	Sport Utility Vehicle		2004-04	2006-07	QBR82	-	-	-
	Optima	2.5	Petrol	Front wheel drive (4x2)	Saloon		2001-01	2005-09	QBR57	QBR164	-	-
	Rio	1.4	Petrol	Front wheel drive (4x2)	Hatchback		2005-03	2011-12	QBR97	QBR189	QBRR707	-
		1.4	Petrol	Front wheel drive (4x2)	Saloon		2005-03	2011-12	-	-	QBRR707	-
		1.5	Petrol	Front wheel drive (4x2)	Saloon		2001-06	2005-02	QBR101	-	QBRR703	-
		1.6	Petrol	Front wheel drive (4x2)	Hatchback		2005-03	2011-12	QBR97	QBR189	QBRR707	-
		1.6	Petrol	Front wheel drive (4x2)	Saloon		2005-03	2011-12	QBR97	QBR189	QBRR707	-
	Rondo	2.0	Petrol	Front wheel drive (4x2)	Multi purpose vehicle		2008-04	2013-03	QBR121	-	-	-
	Soul	1.6	Diesel	Front wheel drive (4x2)	Hatchback		2008-11	2014-12	QBR82	-	-	-
		1.6	Petrol	Front wheel drive (4x2)	Hatchback		2009-09	2014-12	QBR82	-	QBRR711	-
	Sportage	2.0	Diesel	4 Wheel drive (4x4)	Sport Utility Vehicle		2006-02	2010-05	QBR82	QBR164	QBRR711	QBRR803
		2.0	Diesel	4 Wheel drive (4x4)	Sport Utility Vehicle		2010-08	2015-12	QBR121	QBR189	-	-
		2.0	Petrol	4 Wheel drive (4x4)	Saloon		2010-07	2015-12	-	-	QBRR711	QBRR758
		2.0	Petrol	4 Wheel drive (4x4)	Sport Utility Vehicle		2004-07	2010-05	QBR82	QBR164	QBRR711	QBRR758
		2.0	Petrol	4 Wheel drive (4x4)	Sport Utility Vehicle		2014-02	2015-12	-	-	QBRR701	QBRR758
2.0		Petrol	Front wheel drive (4x2)	Coupe		2014-02	2015-12	-	-	QBRR701	QBRR758	
2.0		Petrol	Front wheel drive (4x2)	Sport Utility Vehicle		2010-06	2015-12	-	QBR189	QBRR711	QBRR758	
2.4		Petrol	4 Wheel drive (4x4)	Sport Utility Vehicle		2010-08	2015-12	QBR121	QBR189	QBRR701	QBRR803	
2.7		Petrol	4 Wheel drive (4x4)	Saloon		2004-07	2010-05	QBR82	QBR164	-	-	
2.2		Diesel	4 Wheel drive (4x4)	Terrain cab wagon closed		2006-10	2014-10	-	QBR193	-	-	
Freelander	3.2	Petrol	4 Wheel drive (4x4)	Terrain cab wagon closed		2006-10	2014-10	-	QBR193	-	-	
LEXUS	CT 200h	1.8	Hybrid-petrol	Front wheel drive (4x2)	Hatchback	2010-12	S	-	QBR181	-	-	
	ES 300	3.0	Petrol	Front wheel drive (4x2)	Saloon	2001-08	2006-10	-	QBR165	-	-	
	ES 350	3.5	Petrol	Front wheel drive (4x2)	Sport Utility Vehicle	2012-06	S	-	-	QBRR704	-	
	GS 300	3.0	Petrol	Rear wheel drive (4x2)	Saloon	2005-04	2011-11	-	QBR185	-	-	
	GS 430	4.3	Petrol	Rear wheel drive (4x2)	Saloon	2005-04	2011-11	-	QBR185	-	-	
	IS 250	2.5	Petrol	Rear wheel drive (4x2)	Cabriolet	2013-04	S	-	-	QBRR709	-	
	IS 250	2.5	Petrol	Rear wheel drive (4x2)	Saloon	2005-08	2013-04	QBR111	QBR185	QBRR709	QBRR771	
	IS 250 C	2.5	Petrol	Rear wheel drive (4x2)	Saloon	2009-04	S	-	-	QBRR709	-	
	LS 460	4.6	Petrol	Rear wheel drive (4x2)	Saloon	2006-08	S	QBR65	-	-	-	
	LX 470	4.7	Petrol	4 Wheel drive (4x4)	Sport Utility Vehicle	1998-05	2008-03	QBR65	QBR159	-	-	
	RX 350	3.5	Petrol	4 Wheel drive (4x4)	Saloon	2009-01	2015-09	QBR119	-	-	-	
	RX 350	3.5	Petrol	4 Wheel drive (4x4)	Sport Utility Vehicle	2006-02	2009-06	QBR119	-	-	-	
	RX 450h	3.5	Hybrid-petrol	4 Wheel drive (4x4)	Sport Utility Vehicle	2009-01	2015-09	QBR119	-	-	-	
MAZDA	2	1.5	Petrol	Front wheel drive (4x2)	Hatchback	2007-10	2014-11	QBR116	-	QBRR717	-	
		1.5	Petrol	Front wheel drive (4x2)	Saloon	2010-05	2015-02	QBR116	-	QBRR717	-	
	3	2.0	Diesel	Front wheel drive (4x2)	Hatchback	2007-09	2009-01	QBR87	QBR178	QBRR749	QBRR797	
		2.0	Diesel	Front wheel drive (4x2)	Saloon	2007-09	2009-01	QBR87	QBR171	-	-	
		2.0	Petrol	Front wheel drive (4x2)	Hatchback	2003-10	2014-09	QBR87	QBR178	QBRR749	QBRR797	
		2.0	Petrol	Front wheel drive (4x2)	Hatchback	2004-04	2006-03	QBR87	QBR171	-	-	
		2.0	Petrol	Front wheel drive (4x2)	Hatchback	2013-11	2016-05	QBR124	QBR197	-	-	
		2.0	Petrol	Front wheel drive (4x2)	Saloon	2003-10	2009-12	QBR87	QBR171	QBRR749	QBRR797	
2.0	Petrol	Front wheel drive (4x2)	Saloon	2004-04	2006-03	QBR87	QBR178	-	-			

BRAKE PADS BRAKE ROTORS



Omnicraft™

Application Data For Domestic And Import Passenger Cars And Light/Medium Trucks

Make	Model	Stroke capacity (ltr)	Fuel Type	Drive (instigation) / Axle position	Body Sytle	Year (from)	Year (till)	Omnicraft Part Number Front Brake Pads	Omnicraft Part Number Rear Brake Pads	Omnicraft Part Number Front Brake Rotors	Omnicraft Part Number Rear Brake Rotors
MAZDA	3	2.0	Petrol	Front wheel drive (4x2)	Saloon	2009-03	2014-09	QBR87	QBR178	QBRR749	QBRR797
		2.0	Petrol	Front wheel drive (4x2)	Saloon	2011-09	2013-10	QBR87	QBR178	QBRR749	QBRR797
		2.0	Petrol	Front wheel drive (4x2)	Saloon	2013-11	2016-05	QBR124	QBR197	-	-
		2.2	Diesel	Front wheel drive (4x2)	Hatchback	2009-04	2013-10	QBR87	QBR178	-	-
		2.2	Diesel	Front wheel drive (4x2)	Saloon	2009-04	2013-10	QBR87	QBR178	-	-
		2.2	Diesel	Front wheel drive (4x2)	Saloon	2014-01	2016-05	QBR124	QBR197	-	-
		2.3	Petrol	Front wheel drive (4x2)	Hatchback	2003-10	2005-09	QBR87	QBR171	-	-
		2.3	Petrol	Front wheel drive (4x2)	Hatchback	2004-03	2009-03	QBR87	QBR178	-	-
		2.3	Petrol	Front wheel drive (4x2)	Hatchback	2009-06	2014-09	-	QBR178	-	QBRR799
		2.3	Petrol	Front wheel drive (4x2)	Saloon	2003-10	2009-01	QBR87	QBR178	QBRR754	QBRR799
		2.5	Petrol	Front wheel drive (4x2)	Hatchback	2009-03	2013-05	QBR87	QBR178	QBRR754	QBRR799
		2.5	Petrol	Front wheel drive (4x2)	Hatchback	2013-11	2016-05	QBR124	QBR197	-	-
		2.5	Petrol	Front wheel drive (4x2)	Saloon	2009-05	2014-09	QBR87	QBR178	QBRR754	QBRR799
		2.5	Petrol	Front wheel drive (4x2)	Saloon	2013-11	2016-05	QBR124	QBR197	-	-
		2.5	Petrol	Front wheel drive (4x2)	Sport Utility Vehicle	2013-11	2015-12	QBR124	QBR197	-	-
	6	2.0	Diesel	Front wheel drive (4x2)	Saloon	2005-03	2007-09	-	-	QBRR698	QBRR796
		2.2	Diesel	Front wheel drive (4x2)	Estate	2012-10	2016-05	-	QBR177	-	-
		2.2	Diesel	Front wheel drive (4x2)	Hatchback	2009-01	2012-12	-	QBR177	-	-
		2.2	Diesel	Front wheel drive (4x2)	Sport Utility Vehicle	2010-01	2012-12	-	QBR177	-	-
		2.3	Petrol	Front wheel drive (4x2)	Hatchback	2002-08	2008-02	QBR88	QBR177	QBRR698	QBRR796
		2.3	Petrol	Front wheel drive (4x2)	Saloon	2002-06	2008-02	QBR88	QBR177	QBRR698	QBRR796
		2.5	Petrol	Front wheel drive (4x2)	Hatchback	2010-01	2013-03	-	QBR177	-	-
		2.5	Petrol	Front wheel drive (4x2)	Saloon	2007-08	2013-07	-	QBR177	-	-
		2.5	Petrol	Front wheel drive (4x2)	Saloon	2012-12	S	-	QBR177	QBRR732	-
		2.2	Diesel	Front wheel drive (4x2)	Hatchback	2008-08	2011-12	-	QBR177	-	-
	6 Estate/Wagon	2.2	Diesel	Front wheel drive (4x2)	Sport Utility Vehicle	2012-10	2016-05	-	QBR177	-	-
		2.3	Petrol	Front wheel drive (4x2)	Estate	2002-06	2008-01	-	QBR177	-	-
		2.5	Petrol	Front wheel drive (4x2)	Estate	2007-12	2013-07	-	QBR177	-	-
		2.5	Petrol	Front wheel drive (4x2)	Estate	2012-12	2016-05	-	QBR177	QBRR732	-
		2.5	Diesel	4 Wheel drive (4x4)	Chassis cabin	1999-02	2005-03	QBR66	-	-	-
	Bravo	2.5	Diesel	4 Wheel drive (4x4)	Pick up Truck	1999-02	2005-03	QBR66	-	-	-
		2.6	Petrol	4 Wheel drive (4x4)	Pick up Truck	1999-02	2006-10	QBR66	-	-	-
		2.2	Diesel	Rear wheel drive (4x2)	Chassis cabin	2011-11	S	QBR66	-	-	-
	BT50	2.2	Diesel	Rear wheel drive (4x2)	Pick up Truck	2011-11	S	QBR66	-	-	-
		2.5	Diesel	Rear wheel drive (4x2)	Chassis cabin	2006-12	2011-11	QBR66	-	-	-
		3.0	Diesel	Rear wheel drive (4x2)	Chassis cabin	2006-12	2011-11	QBR66	-	-	-
		3.0	Diesel	Rear wheel drive (4x2)	Pick up Truck	2006-10	2013-06	QBR66	-	-	-
		3.2	Diesel	Rear wheel drive (4x2)	Chassis cabin	2011-11	S	QBR66	-	-	-
		3.2	Diesel	Rear wheel drive (4x2)	Pick up Truck	2011-11	S	QBR66	-	QBRR733	-
	CX3	1.5	Diesel	Front wheel drive (4x2)	Sport Utility Vehicle	2015-01	S	QBR124	QBR197	-	-
	CX5	2.0	Petrol	4 Wheel drive (4x4)	Sport Utility Vehicle	2011-11	S	-	-	QBRR732	QBRR769
		2.0	Petrol	Front wheel drive (4x2)	Sport Utility Vehicle	2011-11	S	-	-	QBRR732	QBRR769
		2.2	Diesel	4 Wheel drive (4x4)	Hatchback	2012-04	S	-	-	QBRR732	QBRR769
		2.5	Petrol	4 Wheel drive (4x4)	Hatchback	2013-02	S	-	-	QBRR732	QBRR769
	CX7	2.2	Diesel	4 Wheel drive (4x4)	Estate	2009-09	2013-03	QBR113	-	-	-
		2.3	Petrol	4 Wheel drive (4x4)	Sport Utility Vehicle	2006-06	2014-12	QBR113	QBR188	QBRR722	-
		2.3	Petrol	Front wheel drive (4x2)	Sport Utility Vehicle	2006-06	2013-03	-	-	QBRR722	-
2.5		Petrol	Front wheel drive (4x2)	Sport Utility Vehicle	2009-07	2013-03	QBR188	-	QBRR722	-	
CX9	3.7	Petrol	4 Wheel drive (4x4)	Sport Utility Vehicle	2007-01	S	QBR113	QBR188	QBRR721	QBRR776	
	3.7	Petrol	Front wheel drive (4x2)	Sport Utility Vehicle	2008-01	S	QBR113	QBR188	QBRR721	QBRR776	
Proceed	2.6	Petrol	4 Wheel drive (4x4)	Pick up Truck	1999-02	2006-12	QBR66	-	-	-	

BRAKE PADS BRAKE ROTORS



Omnicraft™

Application Data For Domestic And Import Passenger Cars And Light/Medium Trucks

Make	Model	Stroke capacity (ltr)	Fuel Type	Drive (instigation) / Axle position	Body Sytle	Year (from)	Year (till)	Omnicraft Part Number Front Brake Pads	Omnicraft Part Number Rear Brake Pads	Omnicraft Part Number Front Brake Rotors	Omnicraft Part Number Rear Brake Rotors
MAZDA	RX8	1.3	Petrol	Rear wheel drive (4x2)	Coupe	2003-06	2012-06	-	-	QBRR745	QBRR795
	Tribute	2.0	Petrol	4 Wheel drive (4x4)	Sport Utility Vehicle	2000-11	2008-05	QBR106	-	-	-
		2.3	Petrol	4 Wheel drive (4x4)	Sport Utility Vehicle	2003-12	2007-03	QBR106	-	-	-
		3.0	Petrol	Front wheel drive (4x2)	Sport Utility Vehicle	2007-04	2008-05	-	-	QBRR720	QBRR762
MERCEDES	C180	1.8	Petrol	Rear wheel drive (4x2)	Saloon	2002-05	2007-02	QBR114	QBR162	QBRR751	QBRR789
		2.0	Petrol	Rear wheel drive (4x2)	Coupe	2001-03	2002-07	QBR114	QBR162	-	-
		2.0	Petrol	Rear wheel drive (4x2)	Estate	2000-11	2002-08	QBR114	-	-	-
		2.0	Petrol	Rear wheel drive (4x2)	Saloon	2000-06	2002-05	QBR114	QBR162	-	-
	C200	1.8	Petrol	Rear wheel drive (4x2)	Cabriolet	2002-05	2007-11	QBR114	-	-	-
		1.8	Petrol	Rear wheel drive (4x2)	Coupe	2002-08	2005-09	QBR114	QBR162	-	-
		1.8	Petrol	Rear wheel drive (4x2)	Saloon	2002-05	2007-11	QBR114	QBR162	QBRR751	-
		2.0	Diesel	Rear wheel drive (4x2)	Estate	1995-07	2000-05	-	QBR162	-	-
		2.0	Petrol	Rear wheel drive (4x2)	Coupe	2001-03	2004-12	QBR114	QBR162	-	-
		2.0	Petrol	Rear wheel drive (4x2)	Estate	1995-09	2000-10	-	QBR162	-	-
		2.0	Petrol	Rear wheel drive (4x2)	Estate	2000-11	2002-08	QBR114	-	-	-
		2.2	Diesel	Rear wheel drive (4x2)	Saloon	2000-06	2004-03	QBR114	QBR162	-	-
	C220	2.2	Diesel	Rear wheel drive (4x2)	Coupe	2001-03	2008-01	QBR114	QBR162	-	-
		2.2	Diesel	Rear wheel drive (4x2)	Saloon	2000-06	2004-12	QBR114	QBR162	-	-
	C230	1.8	Petrol	Rear wheel drive (4x2)	Coupe	2002-05	2008-05	QBR114	QBR162	-	-
		2.3	Petrol	Rear wheel drive (4x2)	Estate	1996-01	1999-10	-	QBR162	-	-
		2.5	Petrol	Rear wheel drive (4x2)	Coupe	2005-03	2008-01	QBR114	-	-	-
	C240	2.4	Petrol	Rear wheel drive (4x2)	Estate	1997-04	2000-10	-	QBR162	-	-
		2.4	Petrol	Rear wheel drive (4x2)	Saloon	1995-09	2000-05	-	QBR162	-	-
	C250	2.5	Diesel	Rear wheel drive (4x2)	Saloon	1995-09	2000-05	-	QBR162	-	-
	C280	2.8	Petrol	Rear wheel drive (4x2)	Saloon	1993-06	2000-05	-	QBR162	-	-
		3.0	Petrol	Rear wheel drive (4x2)	Cabriolet	2005-01	2007-12	QBR114	-	-	-
	C320	3.2	Petrol	Rear wheel drive (4x2)	Coupe	2002-06	2005-12	QBR114	-	-	-
		3.2	Petrol	Rear wheel drive (4x2)	Saloon	2000-05	2005-07	QBR114	-	-	-
	C350	3.5	Petrol	Rear wheel drive (4x2)	Coupe	2005-01	2008-01	QBR114	-	-	-
		3.5	Petrol	Rear wheel drive (4x2)	Saloon	2005-01	2007-02	QBR114	-	-	-
	CLC200	1.8	Petrol	Rear wheel drive (4x2)	Coupe	2008-05	2011-06	-	-	-	QBRR789
		1.8	Petrol	Rear wheel drive (4x2)	Cabriolet	2007-05	2010-03	QBR114	QBR162	-	-
	CLK200	1.8	Petrol	Rear wheel drive (4x2)	Coupe	2002-08	2010-12	QBR114	QBR162	-	-
		1.8	Petrol	Rear wheel drive (4x2)	Estate	2003-02	2010-03	QBR114	QBR162	-	-
		2.0	Petrol	Rear wheel drive (4x2)	Cabriolet	1998-06	2002-03	-	QBR162	-	-
		2.0	Petrol	Rear wheel drive (4x2)	Coupe	1997-04	2002-07	-	QBR162	-	-
		2.0	Petrol	Rear wheel drive (4x2)	Coupe	1997-04	2002-07	-	QBR162	-	-
	CLK230	2.3	Petrol	Rear wheel drive (4x2)	Coupe	1997-04	2003-01	-	QBR162	-	-
		2.6	Petrol	Rear wheel drive (4x2)	Cabriolet	2003-02	2005-07	QBR114	-	-	-
	CLK240	2.6	Petrol	Rear wheel drive (4x2)	Coupe	2002-08	2005-07	QBR114	-	-	-
		2.6	Petrol	Rear wheel drive (4x2)	Coupe	2002-08	2005-07	QBR114	-	-	-
	CLK280	3.0	Petrol	Rear wheel drive (4x2)	Coupe	2005-03	2010-03	QBR114	-	-	-
		3.0	Petrol	Rear wheel drive (4x2)	Saloon	2005-03	2010-12	QBR114	-	-	-
	CLK320	3.2	Petrol	Rear wheel drive (4x2)	Coupe	1997-04	2002-07	-	QBR162	-	-
	CLS500	5.0	Petrol	Rear wheel drive (4x2)	Coupe	2004-10	2010-12	-	-	QBRR711	-
	E200	2.0	Petrol	Rear wheel drive (4x2)	Saloon	2000-07	2002-03	-	QBR162	-	-
E230	2.3	Petrol	Rear wheel drive (4x2)	Saloon	1995-07	1997-10	-	QBR162	-	-	
E240	2.4	Petrol	Rear wheel drive (4x2)	Saloon	1997-04	2000-06	-	QBR162	-	-	
E250	2.5	Diesel	Rear wheel drive (4x2)	Estate	1993-06	1995-06	-	QBR162	-	-	
E270	2.7	Diesel	Rear wheel drive (4x2)	Saloon	1999-07	2002-03	-	QBR162	-	-	
E280	2.8	Petrol	Rear wheel drive (4x2)	Estate	1993-06	1996-01	-	QBR162	-	-	
E300	3.0	Diesel	4 Wheel drive (4x4)	Estate	1993-06	1996-01	-	QBR162	-	-	

BRAKE PADS BRAKE ROTORS



Omnicraft™

Application Data For Domestic And Import Passenger Cars And Light/Medium Trucks

Make	Model	Stroke capacity (ltr)	Fuel Type	Drive (instigation) / Axle position	Body Sytle	Year (from)	Year (till)	Omnicraft Part Number Front Brake Pads	Omnicraft Part Number Rear Brake Pads	Omnicraft Part Number Front Brake Rotors	Omnicraft Part Number Rear Brake Rotors	
MERCEDES	E300	3.0	Diesel	Rear wheel drive (4x2)	Estate	1993-06	1996-06	-	QBR162	-	-	
		3.0	Diesel	Rear wheel drive (4x2)	Saloon	1995-07	1997-10	-	QBR162	-	-	
	E320	3.2	Petrol	Rear wheel drive (4x2)	Cabriolet	1993-06	1996-07	-	QBR162	-	-	
		3.2	Petrol	Rear wheel drive (4x2)	Coupe	1993-06	1996-07	-	QBR162	-	-	
		3.2	Petrol	Rear wheel drive (4x2)	Estate	1993-06	1996-01	-	QBR162	-	-	
	SLK200	1.8	Petrol	Rear wheel drive (4x2)	Cabriolet	2004-03	2011-02	-	QBR162	-	-	
		2.0	Petrol	Rear wheel drive (4x2)	Cabriolet	1996-09	1999-09	-	QBR162	-	-	
Vito 115	2.2	Diesel	Rear wheel drive (4x2)	Van (cargo carriage)	2003-08	2014-08	-	-	QBRR711	-		
MG	ZR	1.8	Petrol	Front wheel drive (4x2)	Hatchback	2001-06	2005-04	-	QBR156	-	-	
	ZS	2.5	Petrol	Front wheel drive (4x2)	Saloon	2002-04	2005-10	-	QBR160	-	-	
	ZT	2.5	Petrol	Front wheel drive (4x2)	Saloon	2001-08	2005-10	-	QBR160	-	-	
	ZT-T	2.5	Petrol	Front wheel drive (4x2)	Estate	2001-12	2005-10	-	QBR160	-	-	
MITSUBISHI	380	3.8	Petrol	Front wheel drive (4x2)	Saloon	2005-04	2008-03	QBR95	QBR180	QBRR706	QBRR773	
	ASX	1.8	Diesel	4 Wheel drive (4x4)	Sport Utility Vehicle	2010-04	S	QBR76	QBR166	-	-	
		2.0	Petrol	4 Wheel drive (4x4)	Sport Utility Vehicle	2010-04	S	QBR76	QBR166	QBRR719	QBRR761	
		2.0	Petrol	Front wheel drive (4x2)	Saloon	2010-06	S	QBR76	QBR166	QBRR719	QBRR761	
		2.2	Diesel	4 Wheel drive (4x4)	Sport Utility Vehicle	2013-04	S	QBR76	QBR166	-	-	
	Challenger	2.5	Diesel	4 Wheel drive (4x4)	Pick up Truck	2008-07	2015-12	QBR94	-	QBRR686	-	
		2.5	Diesel	Front wheel drive (4x2)	Pick up Truck	2008-07	2015-12	-	-	QBRR686	-	
	Lancer	2.0	Petrol	4 Wheel drive (4x4)	Saloon	2007-03	S	-	-	QBRR702	QBRR763	
		2.0	Petrol	4 Wheel drive (4x4)	Saloon	2008-06	S	-	QBR166	-	-	
		2.0	Petrol	4 Wheel drive (4x2)	Saloon	2003-09	2013-01	-	QBR174	-	QBRR788	
		2.0	Petrol	4 Wheel drive (4x2)	Saloon	2013-01	S	QBR76	QBR174	QBRR702	QBRR763	
		2.0	Petrol	Front wheel drive (4x2)	Sport Utility Vehicle	2007-10	S	QBR76	QBR174	QBRR702	QBRR763	
		2.4	Petrol	Front wheel drive (4x2)	Saloon	2005-08	2008-12	QBR76	QBR174	QBRR702	QBRR788	
		2.4 i	Petrol	Front wheel drive (4x2)	Saloon	2008-10	2016-08	QBR76	QBR174	-	-	
		Lancer Estate/Wagon	2.0	Petrol	Front wheel drive (4x2)	Estate	2005-08	2007-07	QBR76	QBR174	-	-
		Lancer Evolution	2.0	Petrol	4 Wheel drive (4x4)	Hatchback	2008-06	S	QBR86	-	-	-
			2.0	Petrol	4 Wheel drive (4x4)	Saloon	2003-10	2007-09	QBR86	QBR174	-	-
	Lancer Sportback	2.0	Petrol	Front wheel drive (4x2)	Saloon	2007-10	S	QBR76	QBR174	QBRR719	-	
		2.0	Petrol	Front wheel drive (4x2)	Saloon	2010-09	2017-12	-	-	QBRR702	QBRR763	
	Mirage	2.4	Petrol	Front wheel drive (4x2)	Hatchback	2008-10	2016-08	QBR76	QBR174	-	-	
	Outlander	Mirage	1.2	Petrol	Front wheel drive (4x2)	Hatchback	2012-05	S	QBR112	-	QBRR734	-
		2.0	Petrol	4 Wheel drive (4x4)	Sport Utility Vehicle	2012-08	S	-	-	QBRR719	-	
		2.0	Petrol	Front wheel drive (4x2)	Sport Utility Vehicle	2012-08	S	-	-	QBRR719	-	
		2.4	Petrol	4 Wheel drive (4x4)	Chassis cabin	2003-02	2006-10	QBR76	QBR174	-	-	
		2.4	Petrol	4 Wheel drive (4x4)	Sport Utility Vehicle	2003-10	2006-10	QBR76	QBR174	-	-	
		2.4	Petrol	4 Wheel drive (4x4)	Sport Utility Vehicle	2006-11	2013-12	QBR76	QBR166	QBRR719	-	
		2.4	Petrol	Front wheel drive (4x2)	Sport Utility Vehicle	2007-06	2013-08	QBR76	QBR166	-	-	
		3.0	Petrol	4 Wheel drive (4x4)	Sport Utility Vehicle	2006-11	2013-08	QBR76	QBR166	QBRR719	QBRR761	
		Pajero	3.2	Diesel	4 Wheel drive (4x4)	Pick up Truck	2007-02	S	QBR79	QBR155	-	-
			3.2	Diesel	4 Wheel drive (4x4)	Terrain cab closed	2007-02	S	QBR79	QBR155	-	-
3.2	Diesel		4 Wheel drive (4x4)	Terrain cab closed	2009-01	S	QBR79	QBR155	-	-		
3.2	Diesel		4 Wheel drive (4x4)	Terrain cab wagon closed	2007-02	S	QBR79	QBR155	-	-		
3.8	Petrol		4 Wheel drive (4x4)	Terrain cab closed	2006-11	S	QBR79	QBR155	-	-		
3.8	Petrol		4 Wheel drive (4x4)	Terrain cab wagon closed	2006-11	S	QBR79	QBR155	-	-		
Triton	2.4	Diesel	4 Wheel drive (4x4)	Chassis cabin	2015-01	S	QBR94	-	-	-		
	2.4	Diesel	4 Wheel drive (4x4)	Pick up Truck	2014-11	S	QBR94	-	-	-		
	2.4	Diesel	Rear wheel drive (4x2)	Chassis cabin	2015-01	S	QBR94	-	-	-		
	2.4	Diesel	Rear wheel drive (4x2)	Pick up Truck	2015-01	S	QBR94	-	-	-		
2.4	Petrol	Rear wheel drive (4x2)	Chassis cabin	2015-01	S	QBR94	-	-	-			

BRAKE PADS BRAKE ROTORS



Omnicraft™

Application Data For Domestic And Import Passenger Cars And Light/Medium Trucks

Make	Model	Stroke capacity (ltr)	Fuel Type	Drive (instigation) / Axle position	Body Sytle	Year (from)	Year (till)	Omnicraft Part Number Front Brake Pads	Omnicraft Part Number Rear Brake Pads	Omnicraft Part Number Front Brake Rotors	Omnicraft Part Number Rear Brake Rotors	
MITSUBISHI	Triton	2.4	Petrol	Rear wheel drive (4x2)	Pick up Truck	2007-05	2015-12	QBR94	-	QBRR686	-	
		2.4	Petrol	Rear wheel drive (4x2)	Pick up Truck	2010-04	2015-12	QBR94	-	-	-	
		2.4	Petrol	Rear wheel drive (4x2)	Sport Utility Vehicle	2005-11	2015-12	QBR94	-	QBRR686	-	
		2.5	Diesel	4 Wheel drive (4x4)	Chassis cabin	2009-09	2015-12	QBR94	-	-	-	
		2.5	Diesel	4 Wheel drive (4x4)	Pick up Truck	2009-09	2015-12	-	-	QBRR686	-	
		2.5	Diesel	4 Wheel drive (4x4)	Terrain cab wagon closed	2010-01	2015-12	QBR94	-	QBRR686	-	
		2.5	Diesel	Rear wheel drive (4x2)	Pick up Truck	2010-01	2015-12	-	-	QBRR686	-	
		2.5	Diesel	Rear wheel drive (4x2)	Terrain cab wagon closed	2005-11	2015-12	QBR94	-	QBRR686	-	
		3.0	Petrol	Rear wheel drive (4x2)	Chassis cabin	1996-10	2006-01	QBR94	-	-	-	
		3.2	Diesel	4 Wheel drive (4x4)	Terrain cab wagon closed	2006-07	2009-12	QBR94	-	QBRR686	-	
NISSAN	350Z	3.5	Petrol	Rear wheel drive (4x2)	Cabriolet	2007-06	2009-12	-	QBR169	-	-	
		3.5	Petrol	Rear wheel drive (4x2)	Coupe	2002-09	2008-12	-	QBR169	-	-	
		3.5	Petrol	Rear wheel drive (4x2)	Estate	2003-10	2007-12	-	QBR169	-	-	
		3.5	Petrol	Rear wheel drive (4x2)	Saloon	2002-10	2006-06	-	QBR169	-	-	
		3.5	Petrol	Rear wheel drive (4x2)	Sport Utility Vehicle	2004-11	2007-01	-	QBR169	-	-	
	Dualis	1.6	Diesel	Front wheel drive (4x2)	Sport Utility Vehicle	2010-01	2014-12	-	-	QBRR714	QBRR800	
		2.0	Petrol	4 Wheel drive (4x4)	Sport Utility Vehicle	2007-08	2013-11	QBR117	QBR169	QBRR714	QBRR800	
	Dualis+2	2.0	Petrol	Front wheel drive (4x2)	Sport Utility Vehicle	2009-08	2013-11	-	-	QBRR714	QBRR800	
		2.0	Petrol	4 Wheel drive (4x4)	Sport Utility Vehicle	2008-08	2013-11	-	-	QBRR714	QBRR800	
	Maxima	2.0	Petrol	Front wheel drive (4x2)	Sport Utility Vehicle	2008-08	2013-11	-	-	QBRR714	QBRR800	
		3.0	Petrol	Front wheel drive (4x2)	Pick up Truck	1988-12	1994-06	-	QBR153	-	-	
		3.0	Petrol	Front wheel drive (4x2)	Saloon	1999-12	2003-08	-	QBR169	-	-	
	Micra	3.5	Petrol	Front wheel drive (4x2)	Coupe	2008-07	2015-12	-	-	-	QBRR800	
		1.4	Petrol	Front wheel drive (4x2)	Hatchback	2003-01	2010-06	QBR104	-	QBRR725	-	
	Mura-	3.5	Petrol	4 Wheel drive (4x4)	Cabriolet	2004-11	2014-09	-	QBR169	-	-	
		3.5	Petrol	4 Wheel drive (4x4)	Coupe	2010-05	2014-09	-	QBR169	-	-	
	Navara	2.4	Petrol	4 Wheel drive (4x4)	Chassis cabin	1999-01	2005-12	QBR75	-	-	-	
		2.4	Petrol	4 Wheel drive (4x4)	Pick up Truck	1997-04	2005-12	QBR75	-	-	-	
		2.5	Diesel	4 Wheel drive (4x4)	Chassis cabin	2002-02	S	QBR75	-	QBRR735	-	
		2.5	Diesel	4 Wheel drive (4x4)	Pick up Truck	2001-11	2012-12	QBR75	- (Drum)	QBRR743	-	
		3.0	Diesel	4 Wheel drive (4x4)	Chassis cabin	2001-11	2005-03	QBR75	-	-	-	
		3.0	Diesel	4 Wheel drive (4x4)	Pick up Truck	2001-11	2005-04	QBR75	-	QBRR743	-	
		3.0	Diesel	Rear wheel drive (4x2)	Pick up Truck	2001-11	2005-04	-	-	QBRR735	-	
		3.0	Petrol	4 Wheel drive (4x4)	Saloon	1998-02	2004-05	QBR75	-	-	-	
		3.2	Diesel	4 Wheel drive (4x4)	Chassis cabin	1998-04	2001-12	QBR75	-	-	-	
		3.2	Diesel	4 Wheel drive (4x4)	Pick up Truck	1997-01	2001-10	QBR75	-	-	-	
		3.3	Petrol	4 Wheel drive (4x4)	Pick up Truck	2003-01	2005-04	QBR75	-	-	-	
		Pathfinder	3.3	Petrol	4 Wheel drive (4x4)	Terrain cab wagon closed	1995-12	2005-07	-	QBR169	-	-
		Pulsar	1.6	Petrol	Front wheel drive (4x2)	Hatchback	2013-02	S	-	-	-	QBRR800
	1.6		Petrol	Front wheel drive (4x2)	Saloon	2000-07	2003-02	QBR56	QBR175	-	-	
1.8	Petrol		Front wheel drive (4x2)	Hatchback	2000-09	2006-06	QBR56	QBR175	-	-		
1.8	Petrol		Front wheel drive (4x2)	Hatchback	2013-02	S	-	-	-	QBRR800		
1.8	Petrol		Front wheel drive (4x2)	Saloon	2000-06	2006-06	QBR56	QBR175	QBRR691	QBRR792		
1.8	Petrol		Front wheel drive (4x2)	Saloon	2013-02	S	-	-	-	QBRR800		
Skyline	2.0	Petrol	Rear wheel drive (4x2)	Coupe	1993-07	1998-05	QBR56	-	-	-		
	2.0	Petrol	Rear wheel drive (4x2)	Saloon	1993-07	1998-05	QBR56	-	-	-		
	2.5	Petrol	4 Wheel drive (4x4)	Coupe	1993-07	1998-05	QBR56	-	-	-		
	2.5	Petrol	4 Wheel drive (4x4)	Saloon	1993-07	1998-05	QBR56	-	-	-		
	2.5	Petrol	Rear wheel drive (4x2)	Coupe	1994-01	2000-07	QBR56	-	-	-		
2.5	Petrol	Rear wheel drive (4x2)	Saloon	1993-07	1998-05	QBR56	-	-	-			

BRAKE PADS BRAKE ROTORS



Omnicraft™

Application Data For Domestic And Import Passenger Cars And Light/Medium Trucks

Make	Model	Stroke capacity (ltr)	Fuel Type	Drive (instigation) / Axle position	Body Sytle	Year (from)	Year (till)	Omnicraft Part Number Front Brake Pads	Omnicraft Part Number Rear Brake Pads	Omnicraft Part Number Front Brake Rotors	Omnicraft Part Number Rear Brake Rotors	
NISSAN	Skyline	3.5	Petrol	4 Wheel drive (4x4)	Sport Utility Vehicle	2001-01	2006-11	-	QBR169	-	-	
		3.5	Petrol	Rear wheel drive (4x2)	Sport Utility Vehicle	2001-02	2006-11	-	QBR169	-	-	
	Stagea	2.5	Petrol	4 Wheel drive (4x4)	Estate	2001-10	2007-12	-	QBR169	-	-	
		3.0	Petrol	Rear wheel drive (4x2)	Estate	2001-10	2003-06	-	QBR169	-	-	
	Tiida	3.5	Petrol	Rear wheel drive (4x2)	Saloon	2005-06	2007-06	-	QBR169	-	-	
		1.8	Petrol	Front wheel drive (4x2)	Hatchback	2006-06	2013-06	-	QBR169	-	-	
	X-Trail	1.8	Petrol	Front wheel drive (4x2)	Saloon	2007-09	2013-06	-	QBR169	-	-	
		2.0	Diesel	4 Wheel drive (4x4)	Sport Utility Vehicle	2007-09	2014-02	QBR117	-	QBRR714	QBRR770	
		2.0	Petrol	Front wheel drive (4x2)	Sport Utility Vehicle	2008-06	2014-02	-	-	QBRR714	QBRR770	
		2.5	Petrol	4 Wheel drive (4x4)	Sport Utility Vehicle	2002-11	2008-12	-	QBR169	-	QBRR770	
		2.5	Petrol	4 Wheel drive (4x4)	Sport Utility Vehicle	2007-06	2014-02	QBR117	QBR169	QBRR714	QBRR770	
		2.5	Petrol	4 Wheel drive (4x4)	Sport Utility Vehicle	2014-02	S	-	-	-	QBRR770	
OPEL	207	1.4	Petrol	Front wheel drive (4x2)	Hatchback	2006-04	2013-10	QBR109	-	-	-	
		1.6	Diesel	Front wheel drive (4x2)	Hatchback	2006-04	2013-10	QBR109	-	-	-	
		1.6	Petrol	Front wheel drive (4x2)	Hatchback	2006-06	2013-10	QBR109	-	-	-	
	307	1.6	Diesel	Front wheel drive (4x2)	Hatchback	2004-04	2007-11	QBR109	-	-	-	
		2.0	Diesel	Front wheel drive (4x2)	Hatchback	2000-08	2007-03	QBR109	-	-	-	
	307 SW	2.0	Diesel	Front wheel drive (4x2)	Saloon	2003-11	2007-11	QBR109	-	-	-	
		1.6	Diesel	Front wheel drive (4x2)	Estate	2003-11	2007-12	QBR109	-	-	-	
	308 CC	2.0	Diesel	Front wheel drive (4x2)	Estate	2002-03	2008-04	QBR109	-	-	-	
		1.6	Petrol	Front wheel drive (4x2)	Cabriolet	2009-02	2014-12	-	-	QBRR705	QBRR772	
	Astra	407	2.0	Diesel	Front wheel drive (4x2)	Hatchback	2004-03	2010-12	-	-	QBRR701	-
		1.4	Petrol	Front wheel drive (4x2)	Hatchback	2009-12	2015-10	-	QBR191	-	-	
		1.6	Petrol	Front wheel drive (4x2)	Estate	2010-10	2015-10	-	QBR191	-	-	
		1.6	Petrol	Front wheel drive (4x2)	Hatchback	2009-12	2015-10	-	QBR191	-	-	
		2.0	Diesel	Front wheel drive (4x2)	Estate	2011-07	2015-10	-	QBR191	-	-	
	Corsa	2.0	Diesel	Front wheel drive (4x2)	Hatchback	2011-07	2015-10	-	QBR191	-	-	
1.6		Petrol	Front wheel drive (4x2)	Hatchback	2006-11	2014-08	QBR102	-	-	-		
PROTON	Exora	1.6	Petrol	Front wheel drive (4x2)	Multi purpose vehicle	2009-04	S	-	QBR193	-	-	
	Koleos	2.0	Diesel	4 Wheel drive (4x4)	Sport Utility Vehicle	2008-06	S	-	QBR169	-	-	
		2.0	Diesel	Front wheel drive (4x2)	Sport Utility Vehicle	2008-06	S	-	QBR169	-	-	
		2.5	Petrol	4 Wheel drive (4x4)	Sport Utility Vehicle	2008-09	S	-	QBR169	-	QBRR770	
		2.5	Petrol	Front wheel drive (4x2)	Sport Utility Vehicle	2008-09	S	-	QBR169	-	-	
	Laguna	2.9	Petrol	Front wheel drive (4x2)	Hatchback	2001-03	2007-08	-	QBR171	-	-	
Laguna Estate/Break	2.9	Petrol	Front wheel drive (4x2)	Estate	2001-03	2007-12	-	QBR171	-	-		
ROVER	75	2.5	Petrol	Front wheel drive (4x2)	Saloon	2001-10	2005-04	-	QBR160	-	-	
	75 Tourer	2.5	Petrol	Front wheel drive (4x2)	Estate	2001-08	2005-04	-	QBR160	-	-	
SAAB	9-3	1.9	Diesel	Front wheel drive (4x2)	Saloon	2006-02	2012-07	-	QBR178	-	-	
		2.8	Petrol	Front wheel drive (4x2)	Saloon	2005-06	2012-07	-	QBR178	-	-	
	9-3 Sport	1.9	Diesel	Front wheel drive (4x2)	Cabriolet	2005-02	2012-07	-	QBR178	-	-	
		1.9	Diesel	Front wheel drive (4x2)	Estate	2004-04	2012-07	-	QBR178	-	-	
		1.9	Diesel	Front wheel drive (4x2)	Saloon	2008-02	2012-07	-	QBR178	-	-	
		2.0	Bio (etha- l) petrol or Metha-l	Front wheel drive (4x2)	Saloon	2007-06	2012-07	-	QBR171	-	-	
		2.0	Petrol	Front wheel drive (4x2)	Saloon	2002-06	2012-07	-	QBR171	-	-	
		2.8	Petrol	Front wheel drive (4x2)	Cabriolet	2005-06	2012-07	-	QBR178	-	-	
SKODA	Fabia	2.8	Petrol	Front wheel drive (4x2)	Estate	2005-06	2012-07	-	QBR178	-	-	
		1.2	Petrol	Front wheel drive (4x2)	Estate	2010-03	S	QBR109	-	-		
		1.2	Petrol	Front wheel drive (4x2)	Hatchback	2010-03	S	QBR109	-	-		
		1.4	Petrol	Front wheel drive (4x2)	Hatchback	2010-05	2014-11	QBR109	-	-		

BRAKE PADS BRAKE ROTORS



Omnicraft™

Application Data For Domestic And Import Passenger Cars And Light/Medium Trucks

Make	Model	Stroke capacity (ltr)	Fuel Type	Drive (instigation) / Axle position	Body Sytle	Year (from)	Year (till)	Omnicraft Part Number Front Brake Pads	Omnicraft Part Number Rear Brake Pads	Omnicraft Part Number Front Brake Rotors	Omnicraft Part Number Rear Brake Rotors
SKODA	Octavia	1.6	Diesel	Front wheel drive (4x2)	Estate	2009-06	2013-03	QBR109	-	-	-
		1.6	Petrol	Front wheel drive (4x2)	Estate	2005-05	2013-03	QBR109	QBR187	-	-
		1.6	Petrol	Front wheel drive (4x2)	Hatchback	2005-05	2013-03	QBR109	QBR187	-	-
		1.8	Petrol	Front wheel drive (4x2)	Estate	2008-11	2013-03	QBR109	QBR187	-	-
		1.8	Petrol	Front wheel drive (4x2)	Hatchback	2007-06	2013-03	QBR109	QBR187	-	-
		1.9	Diesel	4 Wheel drive (4x4)	Estate	2006-05	2009-11	QBR109	QBR187	-	-
		1.9	Diesel	Front wheel drive (4x2)	Estate	2004-09	2010-12	QBR109	QBR187	-	-
		1.9	Diesel	Front wheel drive (4x2)	Hatchback	2004-02	2013-04	QBR109	QBR187	-	-
		2.0	Diesel	4 Wheel drive (4x4)	Estate	2006-07	2010-05	QBR109	QBR187	-	-
		2.0	Diesel	4 Wheel drive (4x4)	Estate	2010-05	2013-02	QBR109	-	-	-
		2.0	Diesel	Front wheel drive (4x2)	Estate	2004-02	2013-03	QBR109	QBR187	-	-
		2.0	Diesel	Front wheel drive (4x2)	Estate	2012-11	S	QBR109	QBR187	-	-
		2.0	Diesel	Front wheel drive (4x2)	Hatchback	2004-02	2013-05	QBR109	QBR187	-	-
		2.0	Petrol	4 Wheel drive (4x4)	Estate	2005-11	2008-10	QBR109	-	-	-
		2.0	Petrol	Front wheel drive (4x2)	Estate	2004-11	2013-02	QBR109	QBR187	-	-
	2.0	Petrol	Front wheel drive (4x2)	Hatchback	2004-11	2013-02	QBR109	QBR187	-	-	
	Octavia Scout	2.0	Diesel	4 Wheel drive (4x4)	Estate	2006-10	2010-05	QBR109	QBR187	-	-
	2.0	Diesel	4 Wheel drive (4x4)	Estate	2010-05	2013-02	QBR109	-	-	-	
	Rapid Spaceback	1.2	Petrol	Front wheel drive (4x2)	Hatchback	2015-05	S	QBR109	-	-	-
	Roomster	1.2	Petrol	Front wheel drive (4x2)	Multi purpose vehicle	2010-03	2015-05	QBR109	-	-	-
		1.6	Diesel	Front wheel drive (4x2)	Multi purpose vehicle	2010-03	2015-05	QBR109	-	-	-
	Superb	1.8	Petrol	4 Wheel drive (4x4)	Estate	2008-11	2015-05	QBR109	-	-	-
		1.8	Petrol	4 Wheel drive (4x4)	Sport Utility Vehicle	2009-10	2015-05	QBR109	-	-	-
		1.8	Petrol	Front wheel drive (4x2)	Estate	2008-09	2015-05	QBR109	QBR187	-	-
		1.8	Petrol	Front wheel drive (4x2)	Hatchback	2009-10	2015-05	QBR109	QBR187	-	-
		2.0	Diesel	4 Wheel drive (4x4)	Estate	2010-11	2015-05	QBR109	-	-	-
		2.0	Diesel	4 Wheel drive (4x4)	Hatchback	2010-11	2015-05	QBR109	-	-	-
		2.0	Diesel	Front wheel drive (4x2)	Estate	2009-10	2015-05	QBR109	QBR187	-	-
		2.0	Diesel	Front wheel drive (4x2)	Hatchback	2008-06	2015-05	QBR109	QBR187	-	-
		3.6	Petrol	4 Wheel drive (4x4)	Estate	2009-10	2015-05	QBR109	QBR187	-	-
		3.6	Petrol	4 Wheel drive (4x4)	Hatchback	2008-09	2015-05	QBR109	QBR187	-	-
	Yeti	1.2	Petrol	Front wheel drive (4x2)	Sport Utility Vehicle	2015-05	S	QBR109	-	-	-
1.4		Petrol	Front wheel drive (4x2)	Sport Utility Vehicle	2015-05	S	QBR109	-	-	-	
1.8		Petrol	4 Wheel drive (4x4)	Hatchback	2009-05	S	QBR109	-	-	-	
1.8		Petrol	4 Wheel drive (4x4)	Sport Utility Vehicle	2011-05	S	QBR109	-	-	-	
2.0		Diesel	4 Wheel drive (4x4)	Sport Utility Vehicle	2009-05	S	QBR109	-	-	-	
SSANG-YONG	Korando	2.9	Diesel	4 Wheel drive (4x4)	Terrain cab closed	1998-07	2000-02	QBR57	-	-	-
	Rexton II	2.7	Diesel	4 Wheel drive (4x4)	Sport Utility Vehicle	2006-09	2013-04	-	QBR164	-	-
SUBARU	BRZ	2.0	Petrol	Rear wheel drive (4x2)	Coupe	2011-06	S	-	-	QBRR736	QBRR767
	Forester	2.0	Diesel	4 Wheel drive (4x4)	Estate	2008-09	2013-09	QBR81	QBR182	-	-
		2.0	Petrol	4 Wheel drive (4x4)	Sport Utility Vehicle	1997-08	2002-09	QBR63	QBR158	-	-
		2.0	Petrol	4 Wheel drive (4x4)	Sport Utility Vehicle	2012-08	S	QBR81	QBR182	-	-
		2.5	Petrol	4 Wheel drive (4x4)	Estate	2003-12	2005-05	QBR81	QBR172	-	-
		2.5	Petrol	4 Wheel drive (4x4)	Saloon	2002-11	2005-05	QBR81	QBR158	-	-
		2.5	Petrol	4 Wheel drive (4x4)	Sport Utility Vehicle	2005-06	2008-05	QBR81	QBR172	-	QBRR787
	2.5	Petrol	4 Wheel drive (4x4)	Sport Utility Vehicle	2008-06	2013-09	QBR81	QBR182	-	QBRR767	
	Impreza	1.6	Petrol	Front wheel drive (4x2)	Saloon	1993-01	1998-08	QBR63	-	-	-
		2.0	Petrol	4 Wheel drive (4x4)	Coupe	1998-09	2000-09	QBR63	QBR158	-	-
2.0		Petrol	4 Wheel drive (4x4)	Hatchback	2007-09	2016-12	QBR81	QBR182	-	-	
2.0		Petrol	4 Wheel drive (4x4)	Saloon	1993-11	1998-08	QBR63	-	-	-	
2.0	Petrol	4 Wheel drive (4x4)	Saloon	1998-06	2000-09	QBR63	QBR158	-	-		

BRAKE PADS BRAKE ROTORS



Omnicraft™

Application Data For Domestic And Import Passenger Cars And Light/Medium Trucks

Make	Model	Stroke capacity (ltr)	Fuel Type	Drive (instigation) / Axle position	Body Sytle	Year (from)	Year (till)	Omnicraft Part Number Front Brake Pads	Omnicraft Part Number Rear Brake Pads	Omnicraft Part Number Front Brake Rotors	Omnicraft Part Number Rear Brake Rotors	
SUBARU	Impreza	2.0	Petrol	4 Wheel drive (4x4)	Saloon	1998-09	2000-10	QBR63	QBR158	-	-	
		2.0	Petrol	4 Wheel drive (4x4)	Saloon	2000-10	2006-09	QBR81	QBR172	-	-	
		2.0	Petrol	4 Wheel drive (4x4)	Saloon	2001-12	2002-11	QBR81	QBR158	-	-	
		2.0	Petrol	4 Wheel drive (4x4)	Saloon	2006-10	2007-03	QBR81	QBR172	QBRR736	QBRR787	
		2.0	Petrol	4 Wheel drive (4x4)	Saloon	2007-09	2012-03	QBR81	QBR182	QBRR736	QBRR767	
		2.0	Petrol	4 Wheel drive (4x4)	Saloon	2011-08	2016-09	QBR81	QBR182	QBRR736	-	
		2.0	Petrol	Front wheel drive (4x2)	Coupe	1995-11	2000-09	QBR63	QBR158	-	-	
		2.0	Petrol	Front wheel drive (4x2)	Saloon	1998-09	2000-09	QBR63	QBR158	-	-	
	Impreza Estate / Wagon Plus	2.0	Petrol	4 Wheel drive (4x4)	Estate	2005-10	2007-12	QBR81	QBR172	-	-	
		2.0	Petrol	4 Wheel drive (4x4)	Saloon	2000-10	2007-12	QBR81	QBR172	-	-	
	Impreza WRX	2.5	Petrol	4 Wheel drive (4x4)	Estate	2002-12	2005-09	QBR81	QBR172	-	-	
		2.0	Petrol	4 Wheel drive (4x4)	Saloon	1998-06	2000-12	QBR63	QBR158	-	-	
		2.0	Petrol	4 Wheel drive (4x4)	Saloon	2001-11	2005-07	QBR86	-	-	-	
		2.0	Petrol	4 Wheel drive (4x4)	Saloon	2005-10	2007-03	QBR81	QBR172	-	-	
		2.5	Petrol	4 Wheel drive (4x4)	Hatchback	2008-01	2013-08	QBR81	QBR182	-	-	
	Liberty	2.5	Petrol	4 Wheel drive (4x4)	Saloon	2005-09	2007-12	QBR86	-	-	-	
		2.0	Petrol	4 Wheel drive (4x4)	Estate	1998-10	2000-07	QBR63	QBR158	-	-	
		2.0	Petrol	4 Wheel drive (4x4)	Estate	2003-09	2005-10	-	QBR182	-	-	
		2.0	Petrol	4 Wheel drive (4x4)	Saloon	2002-06	2003-08	QBR63	QBR158	-	-	
		2.0	Petrol	4 Wheel drive (4x4)	Saloon	2003-09	2005-10	-	QBR158	-	-	
		2.5	Petrol	4 Wheel drive (4x4)	Estate	1998-10	2000-07	QBR63	QBR158	-	-	
		2.5	Petrol	4 Wheel drive (4x4)	Estate	2009-05	2014-12	QBR81	QBR182	QBRR736	QBRR767	
		2.5	Petrol	4 Wheel drive (4x4)	Saloon	1996-09	1998-11	QBR63	-	-	-	
		2.5	Petrol	4 Wheel drive (4x4)	Saloon	2006-09	2009-04	QBR81	QBR182	-	-	
		2.5	Petrol	4 Wheel drive (4x4)	Saloon	2006-09	2009-04	QBR86	-	-	-	
		2.5	Petrol	4 Wheel drive (4x4)	Saloon	2008-06	2009-04	QBR81	QBR182	-	-	
		2.5	Petrol	4 Wheel drive (4x4)	Saloon	2015-01	S	-	-	QBRR736	QBRR767	
		2.5	Petrol	4 Wheel drive (4x4)	Sport Utility Vehicle	2003-09	2008-05	QBR81	QBR182	QBRR736	QBRR759	
		2.5	Petrol	4 Wheel drive (4x4)	Sport Utility Vehicle	2009-05	2014-12	QBR86	-	-	-	
		Liberty Estate / Wagon	2.0	Petrol	4 Wheel drive (4x4)	Estate	2003-09	2007-10	-	QBR182	-	-
			2.0	Petrol	4 Wheel drive (4x4)	Saloon	2003-09	2006-11	-	QBR182	-	-
			2.5	Petrol	4 Wheel drive (4x4)	Estate	1996-09	1998-11	QBR63	-	-	-
			2.5	Petrol	4 Wheel drive (4x4)	Estate	2003-09	2008-05	QBR81	QBR182	-	-
			2.5	Petrol	4 Wheel drive (4x4)	Estate	2006-09	2009-04	QBR81	QBR182	-	-
			2.5	Petrol	4 Wheel drive (4x4)	Estate	2006-09	2009-04	QBR86	-	-	-
	2.5		Petrol	4 Wheel drive (4x4)	Estate	2009-05	2014-12	QBR81	QBR182	QBRR736	QBRR767	
	2.5		Petrol	4 Wheel drive (4x4)	Estate	2012-07	2014-12	QBR81	QBR182	-	-	
	2.5		Petrol	4 Wheel drive (4x4)	Saloon	2009-05	2014-12	QBR86	-	-	-	
	3.0		Petrol	4 Wheel drive (4x4)	Estate	2003-09	2009-04	-	QBR182	-	-	
	Outback	2.5	Petrol	4 Wheel drive (4x4)	Estate	2003-09	2009-04	QBR81	QBR182	-	QBRR759	
		2.5	Petrol	4 Wheel drive (4x4)	Estate	2008-09	2009-09	-	-	-	QBRR759	
		2.5	Petrol	4 Wheel drive (4x4)	Saloon	2000-01	2003-08	QBR63	QBR158	QBRR736	-	
		2.5	Petrol	4 Wheel drive (4x4)	Saloon	2009-05	2014-12	-	QBR182	-	QBRR759	
		3.0	Petrol	4 Wheel drive (4x4)	Estate	2000-08	2003-08	QBR63	QBR158	-	-	
	WRX	2.0	Petrol	4 Wheel drive (4x4)	Saloon	2014-06	S	-	-	-	QBRR767	
XV	2.0	Petrol	4 Wheel drive (4x4)	Sport Utility Vehicle	2012-03	S	QBR81	QBR182	-	-		
SUZUKI	Alto	1.0	Petrol	Front wheel drive (4x2)	Hatchback	2009-01	S	QBR85	-	-	-	
	Carry	1.3	Petrol	Rear wheel drive (4x2)	Terrain cab closed	1999-03	2004-09	QBR85	-	-	-	
	Grand Vitara	1.6	Petrol	4 Wheel drive (4x4)	Terrain cab closed	2001-02	2004-11	QBR61	-	-	-	
		2.0	Petrol	4 Wheel drive (4x4)	Terrain cab closed	2001-01	2004-11	QBR61	-	-	-	

BRAKE PADS BRAKE ROTORS

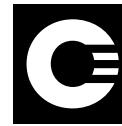


Omnicraft™

Application Data For Domestic And Import Passenger Cars And Light/Medium Trucks

Make	Model	Stroke capacity (ltr)	Fuel Type	Drive (instigation) / Axle position	Body Sytle	Year (from)	Year (till)	Omnicraft Part Number Front Brake Pads	Omnicraft Part Number Rear Brake Pads	Omnicraft Part Number Front Brake Rotors	Omnicraft Part Number Rear Brake Rotors
SUZUKI	Grand Vitara	2.0	Petrol	4 Wheel drive (4x4)	Terrain cab wagon closed	1998-03	2004-11	QBR61	-	-	-
		2.5	Petrol	4 Wheel drive (4x4)	Terrain cab wagon closed	1998-04	2001-12	QBR61	-	-	-
		2.5	Petrol	4 Wheel drive (4x4)	Terrain cab wagon closed	2001-04	2005-12	QBR61	-	QBRR697	-
	Ignis	1.3	Petrol	Front wheel drive (4x2)	Terrain cab closed	2000-07	2005-12	QBR85	-	-	-
		1.5	Petrol	Front wheel drive (4x2)	Hatchback	2003-08	2005-12	QBR85	-	-	-
	Swift	1.4	Petrol	Front wheel drive (4x2)	Hatchback	2011-02	S	QBR116	- (Drum)	QBRR718	-
		1.5	Petrol	4 Wheel drive (4x4)	Hatchback	2005-02	2011-01	QBR103	-	-	-
		1.5	Petrol	Front wheel drive (4x2)	Hatchback	2005-02	2011-12	QBR103	-	QBRR718	-
	Vitara	1.6	Petrol	Front wheel drive (4x2)	Hatchback	2006-05	2012-06	QBR103	- (Drum)	-	-
		2.0	Petrol	4 Wheel drive (4x4)	Terrain cab closed	1996-12	2000-04	QBR61	-	-	-
		2.0	Petrol	4 Wheel drive (4x4)	Terrain cab open	1996-12	2000-04	QBR61	-	-	-
	XL7	2.7	Petrol	4 Wheel drive (4x4)	Sport Utility Vehicle	2001-07	2006-08	QBR61	-	-	-
TOYOTA	86	2.0	Petrol	Rear wheel drive (4x2)	Coupe	2012-03	S	QBR81	-	QBRR736	QBRR767
	Aurion	3.5	Petrol	Front wheel drive (4x2)	Saloon	2006-03	2011-09	QBR78	QBR168	QBRR704	QBRR806
		3.5	Petrol	Front wheel drive (4x2)	Sport Utility Vehicle	2006-10	2011-09	QBR78	QBR168	-	-
		3.5	Petrol	Front wheel drive (4x2)	Sport Utility Vehicle	2011-09	S	QBR98	QBR183	QBRR704	-
	Avalon	3.0	Petrol	Front wheel drive (4x2)	Saloon	1996-10	1999-08	QBR78	QBR168	-	-
	Avensis Verso	2.4	Petrol	Front wheel drive (4x2)	Sport Utility Vehicle	2003-10	2011-12	-	-	QBRR694	-
	Bundera	2.4	Diesel	4 Wheel drive (4x4)	Terrain cab wagon closed	1985-10	1990-05	-	QBR155	-	-
		4.2	Diesel	4 Wheel drive (4x4)	Terrain cab closed	2001-11	2010-12	QBR65	QBR155	-	-
		4.5	Petrol	4 Wheel drive (4x4)	Terrain cab wagon closed	1992-11	1999-11	QBR65	QBR155	-	-
	Camry	2.4	Hybrid-petrol	Front wheel drive (4x2)	Saloon	2006-01	2011-09	QBR98	QBR165	QBRR704	-
		2.4	Petrol	Front wheel drive (4x2)	Multi purpose vehicle	2006-01	2011-09	QBR78	QBR168	QBRR704	QBRR806
		2.4	Petrol	Front wheel drive (4x2)	Saloon	2001-11	2006-11	QBR78	QBR168	QBRR694	QBRR806
		2.5	Hybrid-petrol	Front wheel drive (4x2)	Saloon	2011-09	S	QBR98	QBR183	QBRR704	-
		2.5	Petrol	Front wheel drive (4x2)	Saloon	2011-09	S	QBR78	QBR168	QBRR704	-
		2.5	Petrol	Front wheel drive (4x2)	Saloon	2012-01	S	QBR98	QBR183	QBRR704	-
	Celica	1.8	Petrol	Front wheel drive (4x2)	Hatchback	1999-08	2005-09	QBR73	QBR163	-	-
		1.8	Petrol	Front wheel drive (4x2)	Coupe	2001-11	2007-05	QBR73	-	-	-
	Corolla	1.8	Petrol	Front wheel drive (4x2)	Hatchback	2007-03	2012-09	QBR100	QBR181	QBRR710	QBRR757
		1.8	Petrol	Front wheel drive (4x2)	Saloon	2001-12	2006-10	QBR71 (or) QBR73	QBR163	QBRR671	QBRR793
		1.8	Petrol	Front wheel drive (4x2)	Saloon	2007-03	2014-07	QBR100	QBR181	QBRR710	QBRR757
		2.0	Petrol	Front wheel drive (4x2)	Sport Utility Vehicle	2010-08	2013-11	QBR100	QBR181	-	-
	Corolla Estate/Wagon	1.8	Petrol	Front wheel drive (4x2)	Estate	2001-12	2007-12	QBR73	QBR163	QBRR671	QBRR793
	Echo	1.3	Petrol	Front wheel drive (4x2)	Hatchback	1999-11	2005-10	QBR68	-	QBRR737	-
		1.3	Petrol	Front wheel drive (4x2)	Saloon	1999-11	2005-10	QBR68	QBR71	QBRR737	-
	FJ Cruiser	4.0	Petrol	4 Wheel drive (4x4)	Terrain cab wagon closed	2010-12	S	QBR79	QBR155	QBRR699	QBRR779
	Hiace	1.8	Petrol	Rear wheel drive (4x2)	Van (cargo carriage)	1982-12	1989-07	QBR64	-	-	-
		2.0	Petrol	Rear wheel drive (4x2)	Van (cargo carriage)	1982-12	1989-08	QBR64	-	-	-
2.2		Diesel	Rear wheel drive (4x2)	Van (cargo carriage)	1982-12	1989-11	QBR64	-	-	-	
2.2		Petrol	Rear wheel drive (4x2)	Bus (passenger carriage)	1987-09	1989-08	QBR64	-	-	-	
2.2		Petrol	Rear wheel drive (4x2)	Van (cargo carriage)	1987-09	1989-08	QBR64	-	-	-	
2.4		Diesel	Rear wheel drive (4x2)	Van (cargo carriage)	1984-04	1989-07	QBR64	-	-	-	
2.5		Diesel	Rear wheel drive (4x2)	Bus (passenger carriage)	2006-09	S	-	-	QBRR680	-	
2.5		Diesel	Rear wheel drive (4x2)	Van (cargo carriage)	2005-01	S	QBR93	-	QBRR680	-	
2.5		Diesel	Rear wheel drive (4x2)	Van (cargo carriage)	2005-01	S	-	-	QBRR680	-	
2.7		Petrol	Rear wheel drive (4x2)	Bus (passenger carriage)	2005-01	S	-	-	QBRR680	-	
2.7		Petrol	Rear wheel drive (4x2)	Pick up Truck	2005-01	S	-	-	QBRR680	-	
3.0		Diesel	Rear wheel drive (4x2)	Chassis cabin	2005-01	S	-	-	QBRR680	-	
3.0		Diesel	Rear wheel drive (4x2)	Pick up Truck	2005-01	S	QBR93	-	QBRR680	-	
Hilux		2.4	Petrol	Rear wheel drive (4x2)	Chassis cabin	1988-10	1997-12	QBR64	-	-	-

BRAKE PADS BRAKE ROTORS



Omnicraft™

Application Data For Domestic And Import Passenger Cars And Light/Medium Trucks

Make	Model	Stroke capacity (ltr)	Fuel Type	Drive (instigation) / Axle position	Body Sytle	Year (from)	Year (till)	Omnicraft Part Number Front Brake Pads	Omnicraft Part Number Rear Brake Pads	Omnicraft Part Number Front Brake Rotors	Omnicraft Part Number Rear Brake Rotors
TOYOTA	Hilux	2.4	Petrol	Rear wheel drive (4x2)	Pick up Truck	1988-10	1997-12	QBR64	-	-	-
		2.7	Petrol	Rear wheel drive (4x2)	Chassis cabin	2006-08	2015-05	QBR90	- (Drum)	-	-
		2.7	Petrol	Rear wheel drive (4x2)	Pick up Truck	1998-01	2004-07	QBR64	-	QBRR689	-
		2.7	Petrol	Rear wheel drive (4x2)	Terrain cab wagon closed	1997-08	2005-08	QBR64	-	-	-
		2.7	Petrol	Rear wheel drive (4x2)	Van (cargo carriage)	2005-08	2015-05	QBR90	-	QBRR688	-
		3.0	Diesel	4 Wheel drive (4x4)	Bus (passenger carriage)	2005-08	2015-05	QBR79	-	QBRR699	-
		3.0	Diesel	4 Wheel drive (4x4)	Chassis cabin	2005-02	2015-05	QBR122	-	-	-
		3.0	Diesel	4 Wheel drive (4x4)	Pick up Truck	1997-11	2005-05	QBR64	-	-	-
		3.0	Diesel	4 Wheel drive (4x4)	Van (cargo carriage)	2006-10	2015-05	QBR79 (or) QBR122	-	QBRR699	-
		3.0	Diesel	Rear wheel drive (4x2)	Bus (passenger carriage)	2005-02	2015-05	QBR90	-	-	-
		3.0	Diesel	Rear wheel drive (4x2)	Chassis cabin	1997-08	2005-08	QBR64	-	-	-
		3.0	Diesel	Rear wheel drive (4x2)	Pick up Truck	1998-01	2005-04	QBR64	-	-	-
		3.0	Diesel	Rear wheel drive (4x2)	Pick up Truck	2005-08	2015-05	QBR90	-	-	-
		3.0	Diesel	Rear wheel drive (4x2)	Terrain cab wagon closed	2006-10	2015-05	QBR79	-	-	-
		4.0	Petrol	4 Wheel drive (4x4)	Chassis cabin	2005-08	2015-05	QBR79	- (Drum)	QBRR699	-
		4.0	Petrol	4 Wheel drive (4x4)	Sport Utility Vehicle	2005-08	2015-05	QBR79 (or) QBR122	-	QBRR699	-
		4.0	Petrol	4 Wheel drive (4x4)	Terrain cab wagon closed	2015-07	S	QBR79	-	-	-
		4.0	Petrol	Rear wheel drive (4x2)	Chassis cabin	2005-08	2015-05	QBR90	- (Drum)	-	-
	4.0	Petrol	Rear wheel drive (4x2)	Pick up Truck	2005-08	2015-05	QBR90	- (Drum)	-	-	
	4.0	Petrol	Rear wheel drive (4x2)	Terrain cab wagon closed	2015-07	S	QBR79	-	-	-	
	Kluger	3.3	Petrol	4 Wheel drive (4x4)	Sport Utility Vehicle	2003-10	2007-05	QBR80	QBR165	QBRR747	QBRR804
		3.5	Petrol	4 Wheel drive (4x4)	Saloon	2007-06	2014-02	QBR119	QBR194	QBRR723	QBRR764
		3.5	Petrol	4 Wheel drive (4x4)	Sport Utility Vehicle	2014-03	S	QBR119	-	-	-
		3.5	Petrol	Front wheel drive (4x2)	Saloon	2007-06	2014-02	QBR119	QBR194	QBRR723	QBRR764
		3.5	Petrol	Front wheel drive (4x2)	Sport Utility Vehicle	2014-01	S	QBR119	-	-	-
	Land Cruiser	2.4	Diesel	4 Wheel drive (4x4)	Terrain cab wagon closed	1990-01	1996-03	-	QBR155	-	-
		4.2	Diesel	4 Wheel drive (4x4)	Terrain cab open	1990-01	2007-02	QBR65	QBR155	-	-
		4.2	Diesel	4 Wheel drive (4x4)	Terrain cab wagon closed	1990-01	1997-12	-	QBR155	-	-
		4.2	Diesel	4 Wheel drive (4x4)	Terrain cab wagon closed	1998-01	2008-07	QBR65	QBR159	QBRR740	QBRR780
		4.5	Diesel	4 Wheel drive (4x4)	Terrain cab closed	2007-03	S	QBR65	QBR155	-	-
		4.5	Diesel	4 Wheel drive (4x4)	Terrain cab open	2010-01	S	QBR65	QBR155	-	-
		4.5	Diesel	4 Wheel drive (4x4)	Terrain cab wagon closed	2007-03	S	QBR65	QBR155	-	-
		4.5	Petrol	4 Wheel drive (4x4)	Terrain cab open	1992-11	1999-11	-	QBR155	-	-
		4.5	Petrol	4 Wheel drive (4x4)	Terrain cab wagon closed	1992-11	1999-11	-	QBR155	-	-
	Land Cruiser Amazon	4.2	Diesel	4 Wheel drive (4x4)	Terrain cab wagon closed	1998-01	2003-07	QBR65	QBR159	-	-
	Land Cruiser Prado	2.7	Petrol	4 Wheel drive (4x4)	Chassis cabin	1995-06	2002-07	-	QBR155	-	-
		2.8	Diesel	4 Wheel drive (4x4)	Pick up Truck	2015-06	S	-	-	QBRR728	QBRR779
		3.0	Diesel	4 Wheel drive (4x4)	Pick up Truck	2002-09	2010-02	QBR79	QBR155	QBRR752	QBRR782
		3.0	Diesel	4 Wheel drive (4x4)	Van (cargo carriage)	2009-08	S	QBR79	QBR155	QBRR728	QBRR779
		3.4	Petrol	4 Wheel drive (4x4)	Terrain cab closed	1996-04	2002-08	-	QBR155	-	-
		3.4	Petrol	4 Wheel drive (4x4)	Terrain cab wagon closed	1996-04	2002-08	-	QBR155	-	-
		4.0	Petrol	4 Wheel drive (4x4)	Pick up Truck	2002-09	2010-08	QBR79	QBR155	QBRR752	QBRR782
4.0		Petrol	4 Wheel drive (4x4)	Pick up Truck	2009-08	S	QBR79	QBR155	QBRR728	QBRR779	
4.0		Petrol	4 Wheel drive (4x4)	Terrain cab wagon closed	2005-08	2010-12	-	-	QBRR728	QBRR779	
MR2		1.8	Petrol	Rear wheel drive (4x2)	Cabriolet	1999-10	2007-06	QBR71	-	-	-
Prius	1.5	Hybrid-petrol	Front wheel drive (4x2)	Hatchback	2000-05	2003-08	QBR71	QBR163	-	-	
Prius C	1.5	Hybrid-petrol	Front wheel drive (4x2)	Saloon	2012-02	S	-	-	QBRR671	QBRR793	
RAV 4	2.0	Petrol	4 Wheel drive (4x4)	Sport Utility Vehicle	1994-06	2000-06	-	QBR173	-	-	
	2.0	Petrol	4 Wheel drive (4x4)	Sport Utility Vehicle	2000-06	2005-11	QBR74	QBR173	QBRR746	QBRR802	
	2.0	Petrol	Front wheel drive (4x2)	Saloon	2012-12	S	QBR99	QBR183	QBRR704	QBRR805	

BRAKE PADS BRAKE ROTORS



Omnicraft™

Application Data For Domestic And Import Passenger Cars And Light/Medium Trucks

Make	Model	Stroke capacity (ltr)	Fuel Type	Drive (instigation) / Axle position	Body Sytle	Year (from)	Year (till)	Omnicraft Part Number Front Brake Pads	Omnicraft Part Number Rear Brake Pads	Omnicraft Part Number Front Brake Rotors	Omnicraft Part Number Rear Brake Rotors
TOYOTA	RAV 4	2.2	Diesel	4 Wheel drive (4x4)	Sport Utility Vehicle	2008-12	2013-06	-	-	QBRR704	QBRR805
		2.2	Diesel	4 Wheel drive (4x4)	Sport Utility Vehicle	2012-12	S	QBR99	QBR183	QBRR704	QBRR805
		2.4	Petrol	4 Wheel drive (4x4)	Hatchback	2003-08	2005-11	QBR74	QBR173	-	-
		2.4	Petrol	4 Wheel drive (4x4)	Saloon	2005-11	2013-06	QBR99	QBR183	QBRR704	QBRR805
		2.4	Petrol	Front wheel drive (4x2)	Sport Utility Vehicle	2005-11	2013-06	QBR99	QBR183	QBRR704	QBRR805
		2.5	Petrol	4 Wheel drive (4x4)	Sport Utility Vehicle	2012-12	S	QBR99	QBR183	QBRR704	QBRR805
		3.5	Petrol	4 Wheel drive (4x4)	Sport Utility Vehicle	2005-11	2012-12	QBR99	QBR183	QBRR704	QBRR805
	Rukus	2.4	Petrol	Front wheel drive (4x2)	Sport Utility Vehicle	2010-05	S	QBR100	QBR181	-	-
	Yaris	1.3	Petrol	Front wheel drive (4x2)	Hatchback	2005-11	2012-12	QBR96	QBR181	QBRR679	-
		1.3	Petrol	Front wheel drive (4x2)	Hatchback	2006-01	2012-12	-	-	QBRR679	-
		1.3	Petrol	Front wheel drive (4x2)	Hatchback	2010-12	S	QBR105	-	QBRR679	-
		1.5	Petrol	Front wheel drive (4x2)	Hatchback	2005-11	2012-12	QBR105 (or) QBR96	QBR181	QBRR679	-
		1.5	Petrol	Front wheel drive (4x2)	Hatchback	2010-12	S	QBR105	-	QBRR679	-
		1.5	Petrol	Front wheel drive (4x2)	Hatchback	2014-03	2016-03	-	-	QBRR679	-
		1.5	Petrol	Front wheel drive (4x2)	Saloon	2007-08	S	QBR105	QBR181	QBRR679	-
		1.5	Petrol	Front wheel drive (4x2)	Saloon	2013-04	2016-03	-	-	QBRR679	-
	VOLKSWAGEN	Beetle	1.4	Petrol	Front wheel drive (4x2)	Hatchback	2012-07	2016-07	QBR109	-	-
Caddy		1.2	Petrol	Front wheel drive (4x2)	Van (cargo carriage)	2010-09	2015-05	QBR109	-	QBRR700	-
		1.6	Diesel	Front wheel drive (4x2)	Van (cargo carriage)	2010-08	2015-05	QBR109	-	-	-
		1.6	Petrol	Front wheel drive (4x2)	Bus (passenger carriage)	2004-04	2010-08	QBR109	QBR187	-	-
		1.6	Petrol	Front wheel drive (4x2)	Van (cargo carriage)	2004-04	2010-08	QBR109	QBR187	QBRR700	-
		1.9	Diesel	Front wheel drive (4x2)	Van (cargo carriage)	2004-04	2010-08	QBR109	QBR187	-	-
		2.0	Diesel	4 Wheel drive (4x4)	Bus (passenger carriage)	2010-11	2015-05	QBR109	-	-	-
		2.0	Diesel	4 Wheel drive (4x4)	Van (cargo carriage)	2010-11	2015-05	QBR109	-	-	-
		2.0	Diesel	Front wheel drive (4x2)	Van (cargo carriage)	2010-11	2015-05	QBR109	-	-	-
Caddy Maxi		1.6	Diesel	Front wheel drive (4x2)	Bus (passenger carriage)	2010-08	2015-05	QBR109	-	-	-
		1.9	Diesel	Front wheel drive (4x2)	Bus (passenger carriage)	2007-11	2010-08	QBR109	QBR187	-	-
		1.9	Diesel	Front wheel drive (4x2)	Van (cargo carriage)	2007-11	2010-08	QBR109	QBR187	-	-
		2.0	Diesel	4 Wheel drive (4x4)	Bus (passenger carriage)	2010-11	2015-05	QBR109	-	-	-
		2.0	Diesel	4 Wheel drive (4x4)	Van (cargo carriage)	2010-11	2015-05	QBR109	-	-	-
		2.0	Diesel	Front wheel drive (4x2)	Bus (passenger carriage)	2010-11	2015-05	QBR109	-	-	-
Eos		2.0	Petrol	Front wheel drive (4x2)	Cabriolet	2006-05	2010-10	QBR109	QBR187	QBRR700	-
Golf		1.2	Petrol	Front wheel drive (4x2)	Hatchback	2009-05	2012-11	QBR109	QBR187	-	-
		1.4	Petrol	Front wheel drive (4x2)	Hatchback	2005-11	2012-11	QBR109	QBR187	-	-
		1.4	Petrol	Front wheel drive (4x2)	Hatchback	2014-05	S	-	-	QBRR700	-
		1.6	Diesel	Front wheel drive (4x2)	Hatchback	2009-02	2012-11	QBR109	QBR187	QBRR711	-
		1.6	Petrol	Front wheel drive (4x2)	Hatchback	2004-01	2008-11	QBR109	QBR187	-	-
		1.9	Diesel	Front wheel drive (4x2)	Hatchback	2003-10	2008-11	QBR109	QBR187	-	-
		2.0	Diesel	Front wheel drive (4x2)	Hatchback	2003-10	2012-11	QBR109	QBR187	QBRR700	-
		2.0	Petrol	4 Wheel drive (4x4)	Hatchback	2009-11	2012-11	QBR109	QBR187	-	-
		2.0	Petrol	Front wheel drive (4x2)	Hatchback	2004-08	2009-02	QBR109	QBR187	QBRR700	QBRR786
		2.0	Petrol	Front wheel drive (4x2)	Hatchback	2009-02	2012-11	QBR109	QBR187	-	-
		2.0	Petrol	Front wheel drive (4x2)	Hatchback	2013-04	S	-	-	QBRR700	-
		3.2	Petrol	4 Wheel drive (4x4)	Hatchback	2006-05	2008-11	QBR109	QBR187	-	-
		3.2	Petrol	4 Wheel drive (4x4)	Hatchback	2006-05	2008-11	QBR109	-	-	-
		Golf Cabrio	1.4	Petrol	Front wheel drive (4x2)	Cabriolet	2011-03	2016-05	QBR109	-	-
Golf Estate/Variant	1.4	Petrol	Front wheel drive (4x2)	Estate	2008-06	2013-07	QBR109	QBR187	-	-	
	1.6	Diesel	Front wheel drive (4x2)	Estate	2009-07	2013-07	QBR109	-	-	-	
	2.0	Diesel	Front wheel drive (4x2)	Estate	2009-07	2013-07	QBR109	QBR187	-	-	
Jetta	1.4	Petrol	Front wheel drive (4x2)	Saloon	2008-07	2010-10	QBR109	QBR187	-	-	
	1.4	Petrol	Front wheel drive (4x2)	Saloon	2011-04	2014-07	QBR109	-	-	QBRR798	

BRAKE PADS BRAKE ROTORS



Omnicraft™

Application Data For Domestic And Import Passenger Cars And Light/Medium Trucks

Make	Model	Stroke capacity (ltr)	Fuel Type	Drive (instigation) / Axle position	Body Sytle	Year (from)	Year (till)	Omnicraft Part Number Front Brake Pads	Omnicraft Part Number Rear Brake Pads	Omnicraft Part Number Front Brake Rotors	Omnicraft Part Number Rear Brake Rotors
VOLKSWAGEN	Jetta	1.6	Diesel	Front wheel drive (4x2)	Saloon	2009-07	2010-10	QBR109	QBR187	-	-
		1.6	Diesel	Front wheel drive (4x2)	Saloon	2010-11	2014-07	QBR109	-	-	-
		2.0	Diesel	Front wheel drive (4x2)	Saloon	2008-07	2010-10	QBR109	QBR187	-	-
		2.0	Diesel	Front wheel drive (4x2)	Saloon	2010-10	S	QBR109	QBR187	-	-
		2.0	Petrol	Front wheel drive (4x2)	Saloon	2005-05	2005-11	QBR109	QBR187	QBRR753	QBRR798
		2.0	Petrol	Front wheel drive (4x2)	Saloon	2005-09	2010-10	QBR109	QBR187	QBRR700	QBRR798
	Passat	1.8	Petrol	Front wheel drive (4x2)	Saloon	2007-05	2010-11	QBR109	QBR187	-	-
		1.8	Petrol	Front wheel drive (4x2)	Saloon	2010-08	2014-12	-	-	QBRR700	QBRR786
		2.0	Diesel	Front wheel drive (4x2)	Saloon	2006-02	2010-11	QBR109	QBR187	-	-
		2.0	Petrol	Front wheel drive (4x2)	Saloon	2005-07	2010-11	QBR109	QBR187	-	-
		3.2	Petrol	4 Wheel drive (4x4)	Saloon	2005-09	2010-11	QBR109	QBR187	-	-
	Passat Alltrack	3.6	Petrol	4 Wheel drive (4x4)	Estate	2007-04	2010-11	QBR109	QBR187	-	-
	Passat CC	2.0	Diesel	4 Wheel drive (4x4)	Estate	2013-01	2014-12	QBR109	QBR187	-	-
	Passat Estate / Variant	2.0	Diesel	Front wheel drive (4x2)	Estate	2008-08	2010-11	QBR109	-	-	-
		1.8	Petrol	Front wheel drive (4x2)	Estate	2007-05	2014-12	QBR109	QBR187	-	-
		2.0	Diesel	Front wheel drive (4x2)	Coupe	2008-05	2010-11	QBR109	QBR187	-	-
		2.0	Diesel	Front wheel drive (4x2)	Estate	2010-11	2014-12	QBR109	QBR187	-	-
		2.0	Petrol	Front wheel drive (4x2)	Estate	2005-07	2010-11	QBR109	QBR187	-	-
		3.2	Petrol	Front wheel drive (4x4)	Estate	2005-09	2010-11	-	QBR187	-	-
	Polo	3.6	Petrol	4 Wheel drive (4x4)	Estate	2007-04	2010-11	QBR109	QBR187	-	-
		1.2	Petrol	Front wheel drive (4x2)	Hatchback	2014-02	S	QBR109	-	-	-
		1.4	Petrol	Front wheel drive (4x2)	Hatchback	2010-05	2014-05	QBR109	-	-	-
	Scirocco	1.8	Petrol	Front wheel drive (4x2)	Hatchback	2005-09	2009-11	-	-	QBRR704	-
		2.0	Petrol	Front wheel drive (4x2)	Coupe	2009-11	S	-	QBR187	-	-
Tiguan	1.4	Petrol	Front wheel drive (4x2)	Sport Utility Vehicle	2011-05	S	-	-	QBRR700	QBRR786	
	2.0	Diesel	4 Wheel drive (4x4)	Sport Utility Vehicle	2007-11	S	-	QBR187	QBRR700	QBRR786	
	2.0	Petrol	4 Wheel drive (4x4)	Sport Utility Vehicle	2007-11	2011-05	-	QBR187	QBRR700	QBRR786	
	2.0	Petrol	4 Wheel drive (4x4)	Sport Utility Vehicle	2011-05	S	QBR109	QBR187	QBRR700	QBRR786	
VOLVO	C30	2.4	Diesel	Front wheel drive (4x2)	Hatchback	2006-10	2010-12	QBR87	QBR178	-	-
	S40	2.4	Diesel	Front wheel drive (4x2)	Estate	2006-03	2012-05	QBR87	QBR171	-	-
		2.4	Petrol	Front wheel drive (4x2)	Saloon	2003-09	2010-09	QBR87	QBR171	-	-
	S60	2.4	Petrol	4 Wheel drive (4x4)	Saloon	2001-01	2010-04	QBR86	-	-	-
		2.4	Petrol	Front wheel drive (4x2)	Saloon	2000-07	2010-03	QBR86	-	-	-
		2.5	Petrol	4 Wheel drive (4x4)	Saloon	2002-06	2010-03	QBR86	-	-	-
	S80	2.5	Petrol	Front wheel drive (4x2)	Saloon	2002-06	2010-03	QBR86	-	-	-
		2.4	Diesel	4 Wheel drive (4x4)	Sport Utility Vehicle	2010-01	2011-12	-	QBR193	-	-
		2.4	Diesel	Front wheel drive (4x2)	Sport Utility Vehicle	2006-08	2009-05	-	QBR193	-	-
		3.0	Petrol	4 Wheel drive (4x4)	Sport Utility Vehicle	2007-05	2010-12	-	QBR193	-	-
		3.2	Petrol	4 Wheel drive (4x4)	Sport Utility Vehicle	2006-10	2010-03	-	QBR193	-	-
	V40	4.4	Petrol	4 Wheel drive (4x4)	Saloon	2006-08	2012-03	-	QBR193	-	-
		1.6	Diesel	Front wheel drive (4x2)	Hatchback	2012-03	S	QBR87	QBR178	-	-
		2.0	Diesel	Front wheel drive (4x2)	Hatchback	2012-03	S	QBR87	QBR178	-	-
	V40 Cross Country	2.5	Petrol	Front wheel drive (4x2)	Hatchback	2012-07	S	QBR87	QBR178	-	-
		2.0	Diesel	Front wheel drive (4x2)	Hatchback	2012-10	S	QBR87	QBR178	-	-
V50	2.4	Diesel	Front wheel drive (4x2)	Saloon	2006-03	2012-05	QBR87	QBR178	-	-	
	2.4	Petrol	Front wheel drive (4x2)	Estate	2003-12	2010-09	QBR87	QBR178	-	-	
	2.5	Petrol	4 Wheel drive (4x4)	Estate	2004-05	2012-05	-	QBR171	-	-	
V70	2.5	Petrol	Front wheel drive (4x2)	Estate	2003-12	2008-12	-	QBR171	-	-	
	2.5	Petrol	4 Wheel drive (4x4)	Estate	2002-08	2007-08	QBR86	-	-	-	

BRAKE PADS BRAKE ROTORS



Omnicraft™

Application Data For Domestic And Import Passenger Cars And Light/Medium Trucks

Make	Model	Stroke capacity (ltr)	Fuel Type	Drive (instigation) / Axle position	Body Sytle	Year (from)	Year (till)	Omnicraft Part Number Front Brake Pads	Omnicraft Part Number Rear Brake Pads	Omnicraft Part Number Front Brake Rotors	Omnicraft Part Number Rear Brake Rotors	
VOLVO	V70	2.5	Petrol	Front wheel drive (4x2)	Estate	2002-09	2007-10	QBR86	-	-	-	
		3.0	Petrol	4 Wheel drive (4x4)	Estate	2007-08	2010-12	-	QBR193	-	-	
		3.0	Petrol	4 Wheel drive (4x4)	Sport Utility Vehicle	2011-05	S	-	QBR193	-	-	
	XC60	2.4	Diesel	4 Wheel drive (4x4)	Saloon	2009-05	S	-	QBR193	-	-	
		2.4	Diesel	4 Wheel drive (4x4)	Sport Utility Vehicle	2008-06	2009-12	-	QBR193	-	-	
		2.4	Diesel	4 Wheel drive (4x4)	Sport Utility Vehicle	2012-05	S	-	QBR193	-	-	
		3.0	Petrol	4 Wheel drive (4x4)	Saloon	2008-07	2010-03	-	QBR193	-	-	
		3.0	Petrol	4 Wheel drive (4x4)	Saloon	2009-03	S	-	QBR193	QBRR727	QBRR777	
		3.2	Petrol	4 Wheel drive (4x4)	Saloon	2009-05	2010-12	-	QBR193	QBRR727	QBRR777	
		3.2	Petrol	4 Wheel drive (4x4)	Sport Utility Vehicle	2010-04	S	-	QBR193	QBRR727	QBRR777	
		XC70	2.4	Diesel	4 Wheel drive (4x4)	Saloon	2007-08	2009-04	-	QBR193	-	-
			2.4	Diesel	4 Wheel drive (4x4)	Sport Utility Vehicle	2009-05	2012-12	-	QBR193	-	-
	3.0		Petrol	4 Wheel drive (4x4)	Estate	2010-01	S	-	QBR193	-	-	
	3.2		Petrol	4 Wheel drive (4x4)	Sport Utility Vehicle	2007-08	2010-12	-	QBR193	-	-	

S: Still continuing - current model - Not Available





Information in this publication was correct at time of publishing, April 2020.
Ford reserves the right to make any changes or updates at any time and without notice.
©Copyright Ford Motor Company of Australia Limited.
Not to be reproduced without the written permission of Ford.

Omnicraft™ is a trademark of Ford Motor Company